



PROTECTIVE SERVICES FACT BOOK



New Mexico

**Children, Youth & Families Department
Protective Services**

(505) 827-8400 www.cyfd.org

**Annual
CALENDAR YEAR 2008**



Adopt a New Mexico Child
Foster a future!

Photos by Gene Peach

Data for the FACT BOOK is prepared through the collaborative efforts of the Research/Evaluation & FACTS Bureau and the Information Technology Services of Children Youth and Families and with the assistance and guidance of the U.S. Department of Health and Human Services, Administration for Children and Families, Administration on Children, Youth and Families Children's Bureau.

Protective Services (PS)/Director's Office
 Phone No. (505) 827-8400
www.cyfd.org

Angela Adams	Director (during period of Performance)
Jared Rounsville	Current Acting Director
Maryellen Bearzi	Administrative Deputy Director
Francine Anaya	Clinical Deputy Director
Deborah Martinez	Program Manager

Published by: Protective Services
 Research Evaluation & FACTS Bureau

Delia Garcia
 Retta Prophet
 Jon Courtney

Cover: Photo by David Marks

The photos in this booklet represent the range of children who are available for adoption or who have been adopted through CYFD. For more information on any of these children, visit: www.cyfd.org.

Special thanks to the participating photographers.

Data in this document may be different than previously reported due to the run dates of production reports used for data reporting.

Inside this issue:

Child Protective Services Safety

CPS Reports of Abuse and Neglect	6
CPS Investigations	8
CPS Victims	10
CPS Allegations	11
Recurrence of Maltreatment	14
Children Maltreated in Foster Care	15

Permanency

Children In Foster Care	17
Permanency Plans	18
Children with a Plan of Adoption	19
Finalized Adoptions	20
Children Reunified	21
Children Reentering Care	22
Children with no More Than Two Placements	23

Regional Data

Region One (NW)	25
Region Two (NE)	28
Region Three (Metro)	31
Region Four (SE)	34
Region Five (SW)	37
Regional Charts Comparison	40

Incarcerated Parents and the Child Welfare System

Children in state custody with incarcerated parents represent a unique and understudied subpopulation of the child welfare system. The New Mexico Children, Youth & Families Department's Research/Evaluation and FACTS Bureau was therefore motivated to examine data for children in state custody with incarcerated parents as a condition associated with removal. Using data from the Adoption and Foster Care Administrative Reporting System (AFCARS) rolling 12 month files and looking across the last four state fiscal years (SFY), it is clear that there is a rise in the proportion of children in custody with incarcerated parent as a condition of removal (see chart). This rise reflects the increasing challenges the child welfare system is presented with, and also infers an associated growth in prison populations.

According to the US Department of Justice, between 2000 and 2006 there was a 12.9% increase in the national prison population, and over the same time period there was a 24.3% increase in the New Mexico prison population (Sabol, Couture, & Harrison, 2007). The increase of prison populations and proportion of children in state custody with incarcerated parents is compelling, as researchers have suggested that incarceration of a parent is related to higher rates of parental substance abuse (Phillips, Burns, Wagner, & Barth, 2004), and with unstable living arrangements for the family (Johnston, 1995).

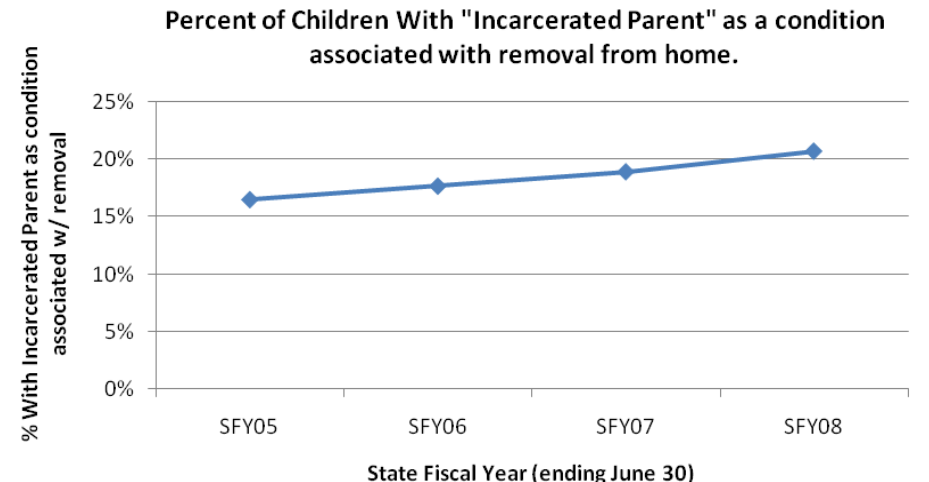
These notions are supported by data from New Mexico's child welfare system, as having an incarcerated parent is significantly correlated with other conditions associated with removal including: a) "substance abuse of parent" (alcohol and drug) and b) "inadequate housing". Therefore, a number of factors beyond the incarceration of a parent must be considered when analyzing the potential risk set for such children. In summary, children with "incarcerated parents" as a condition associated with removal made up approximately one-fifth of the children served by CYFD Protective Services for the 12 month period ending June 30, 2008. It should be noted that many children of incarcerated parents in state custody do have positive outcomes. Rather than stigmatize children with incarcerated parents, one should recognize that these children often present related unique characteristics, case complexities and associated challenges such as parental substance abuse and inadequate housing. The particular characteristics and challenges of children with incarcerated parents would benefit both from further research and perhaps targeted child welfare practice.

Gabel, K. & Johnston, D. (1995). Children of incarcerated parents. New York: Lexington Press.

Johnston, E. (1995). The care and placement of prisoners' children. In K. Gabel & D. Johnston (eds.), Children of incarcerated parents. New York: Lexington Press.

Phillips, S.D., Burns, D.J., Wagner, H.R., & Barth, R.P. (2004). Parental arrest and children involved with child welfare services agencies. American Journal of Orthopsychiatry, 74, 174-186.

Sabol, W.J., Couture, H., & Harrison, P.M. (2007). "Prisoners in 2006." Bureau of Justice Statistics Bulletin. NJC 219416, Washington, DC: United States Department of Justice, Bureau of Justice Statistics, Dec 2007.



Source: AFCARS 12 Rolling Months For Periods Specified.
Includes all children regardless of duration of stay in custody.

Adopt a New Mexico Child

Foster a future!



Photo by David Marks



Photo by Genevieve Russell

SAFETY

CPS REPORTS OF ABUSE AND NEGLECT (ANNUAL)

JANUARY - DECEMBER 2008

County	Accepted Reports ²		Not Accepted Reports ³		Total Reports Received	
	#	%	#	%	#	% of State-wide Total
Bernalillo	4,218	43.3%	5,530	56.7%	9,748	31.7%
Catron	11	55.0%	9	45.0%	20	0.1%
Chaves	656	53.1%	579	46.9%	1,235	4.0%
Cibola	161	43.8%	207	56.3%	368	1.2%
Colfax	135	46.9%	153	53.1%	288	0.9%
Curry	437	50.4%	430	49.6%	867	2.8%
De Baca	15	65.2%	8	34.8%	23	0.1%
Doña Ana	1,643	43.6%	2,122	56.4%	3,765	12.3%
Eddy	525	50.1%	523	49.9%	1,048	3.4%
Grant	261	45.9%	308	54.1%	569	1.9%
Guadalupe	36	45.6%	43	54.4%	79	0.3%
Harding	1	14.3%	6	85.7%	7	0.0%
Hidalgo	65	44.5%	81	55.5%	146	0.5%
Lea	462	50.4%	455	49.6%	917	3.0%
Lincoln	139	50.7%	135	49.3%	274	0.9%
Los Alamos	42	39.3%	65	60.7%	107	0.3%
Luna	203	47.1%	228	52.9%	431	1.4%
McKinley	325	45.7%	386	54.3%	711	2.3%
Mora	18	34.6%	34	65.4%	52	0.2%
Otero	326	47.7%	358	52.3%	684	2.2%
Quay	134	52.8%	120	47.2%	254	0.8%
Rio Arriba	228	41.2%	326	58.8%	554	1.8%
Roosevelt	157	54.5%	131	45.5%	288	0.9%
San Juan	779	46.1%	909	53.9%	1,688	5.5%
San Miguel	267	47.9%	290	52.1%	557	1.8%
Sandoval	689	42.9%	916	57.1%	1,605	5.2%
Santa Fe	686	42.6%	924	57.4%	1,610	5.2%
Sierra	94	38.4%	151	61.6%	245	0.8%
Socorro	167	46.5%	192	53.5%	359	1.2%
Taos	207	42.8%	277	57.2%	484	1.6%
Torrance	142	46.1%	166	53.9%	308	1.0%
Union	26	38.8%	41	61.2%	67	0.2%
Unknown ¹	9	9.3%	88	90.7%	97	0.3%
Valencia	569	44.5%	709	55.5%	1,278	4.2%
State Totals	13,833	45.0%	16,900	55.0%	30,733	100%

Source: Sm01a02

Notes:

1. An Unknown report is a report that did not contain a zip code at the time the report was entered into the **Family And Child Tracking System (FACTS)**.
2. Accepted Reports are comprised of reports of alleged child maltreatment with sufficient basis to receive a subsequent investigation by CYFD staff.
3. Not Accepted Reports are comprised of reports of alleged child maltreatment with insufficient basis to receive a subsequent investigation by CYFD staff and may include duplicate reports.

CPS REPORTS OF ABUSE AND NEGLECT¹ (ANNUAL)

JANUARY - DECEMBER 2008

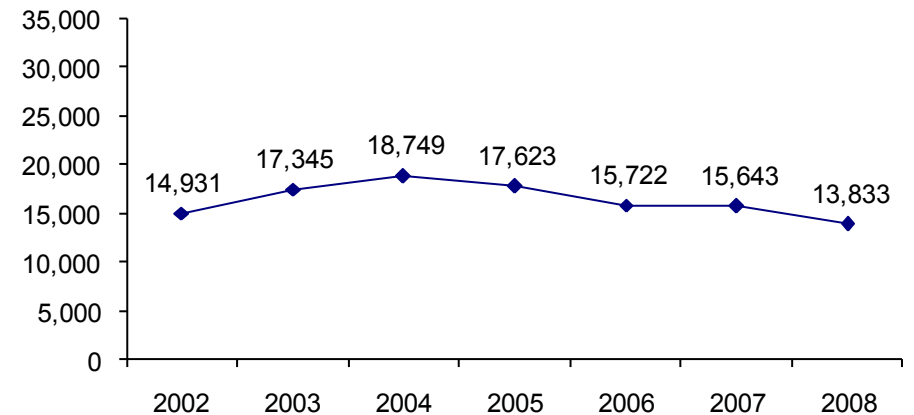
Notes:

1. A screening determination on an incoming report is made by State Central Intake (SCI). Once accepted, the PS report is assigned to the appropriate county office for investigation.

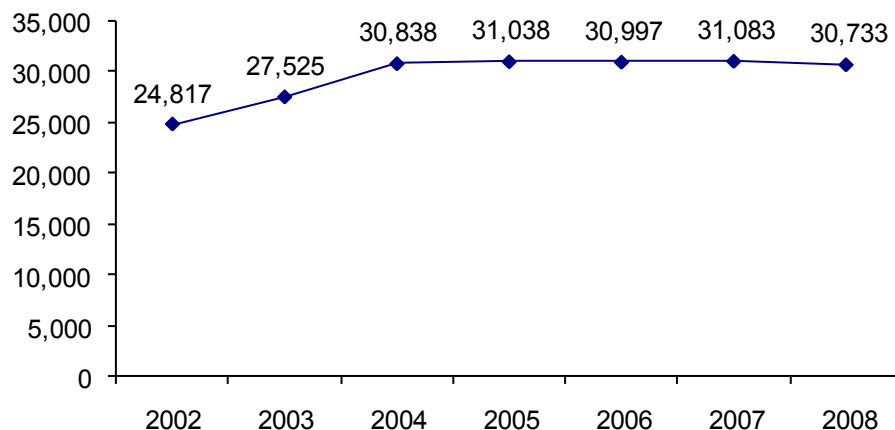
2. Reasons for non-acceptance of a report may include:

- No specific allegation/risk of abuse/neglect,
- Insufficient information to investigate,
- Referral to another agency,
- Perpetrator is non-caretaker/out-of-home,
- Referral to law enforcement,
- Does not meet sufficiency screening criteria, and/or
- Duplicate reports.

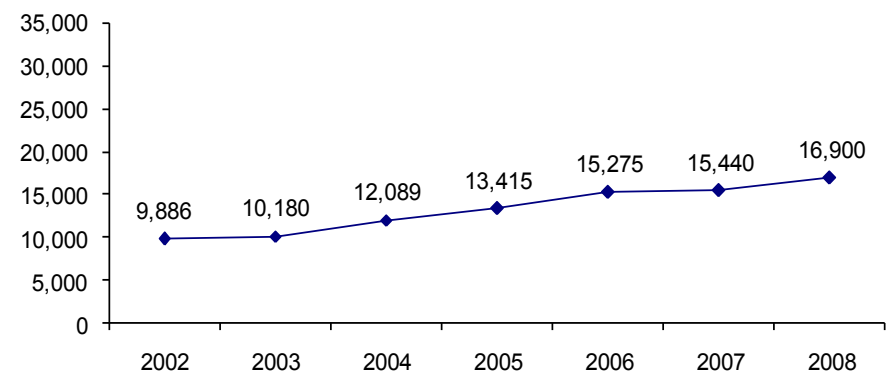
Accepted Reports



Total Reports



Not Accepted or Screened-Out Reports²



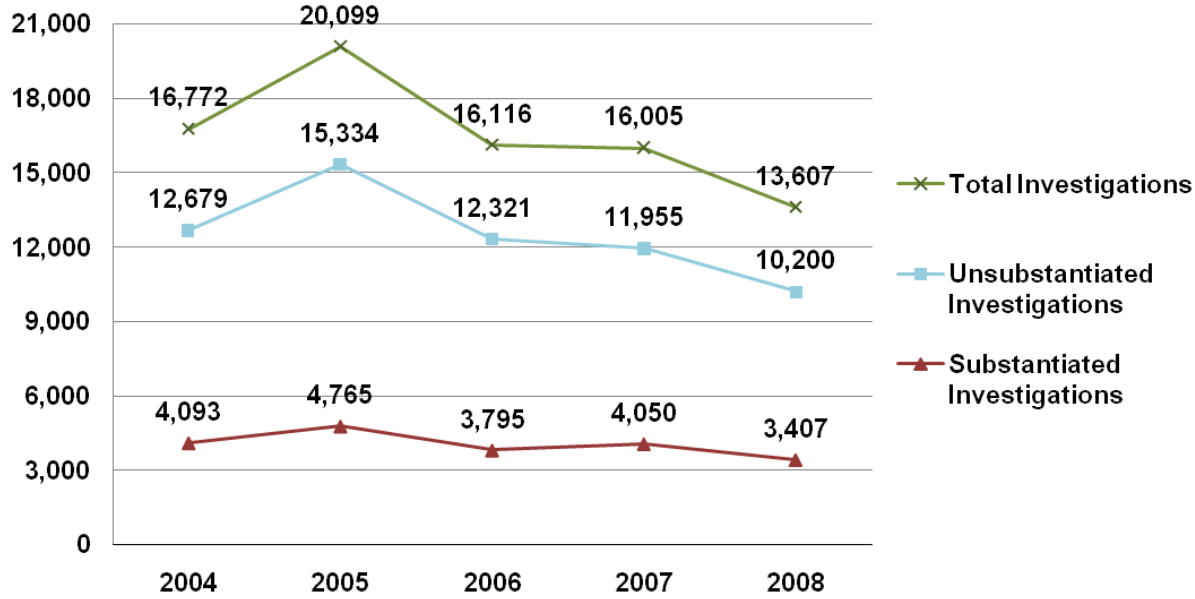
Source: SM01a02

CPS INVESTIGATIONS (ANNUAL)

JANUARY - DECEMBER 2008

County	Accepted Reports	Substantiated		Unsubstantiated		Total	County % of State Total Investigations	Number of Substantiated Child Victims	Victims Rate per 1,000
		#	%	#	%				
Bernalillo East	4,218	381	19.5%	1,570	80.5%	1,951	14.3%	546	7.0
Bernalillo West		352	17.0%	1,719	83.0%	2,071	15.2%	470	
Catron	11	3	37.5%	5	62.5%	8	0.1%	5	6.7
Chaves	656	238	37.4%	398	62.6%	636	4.7%	378	21.2
Cibola	161	59	39.1%	92	60.9%	151	1.1%	201	25.6
Colfax	135	32	24.1%	101	75.9%	133	1.0%	40	11.2
Curry	437	175	42.2%	240	57.8%	415	3.0%	249	18.4
De Baca	15	5	31.3%	11	68.8%	16	0.1%	5	9.3
Doña Ana	1,643	392	23.3%	1,287	76.7%	1,679	12.3%	599	11.5
Eddy	525	140	26.2%	395	73.8%	535	3.9%	201	13.5
Grant	261	55	17.7%	256	82.3%	311	2.3%	69	8.5
Guadalupe	36	14	46.7%	16	53.3%	30	0.2%	23	18.7
Harding	1	1	100.0%	0	0.0%	1	0.0%	1	6.1
Hidalgo	65	15	30.6%	34	69.4%	49	0.4%	20	10.6
Lea	462	179	35.7%	323	64.3%	502	3.7%	257	15.4
Lincoln	139	47	35.9%	84	64.1%	131	1.0%	55	12.5
Los Alamos	42	11	23.9%	35	76.1%	46	0.3%	12	2.5
Luna	203	59	31.9%	126	68.1%	185	1.4%	79	10.5
McKinley	325	113	33.4%	225	66.6%	338	2.5%	158	5.6
Mora	18	3	20.0%	12	80.0%	15	0.1%	3	2.2
Otero	326	93	25.2%	276	74.8%	369	2.7%	132	7.2
Quay	134	70	49.0%	73	51.0%	143	1.1%	104	40.9
Rio Arriba	228	68	28.7%	169	71.3%	237	1.7%	101	8.6
Roosevelt	157	46	32.4%	96	67.6%	142	1.0%	79	15.6
San Juan	779	151	19.4%	629	80.6%	780	5.7%	213	5.7
San Miguel	267	97	35.4%	177	64.6%	274	2.0%	120	14.5
Sandoval	689	88	15.0%	499	85.0%	587	4.3%	118	4.4
Santa Fe	686	131	20.1%	521	79.9%	652	4.8%	175	5.6
Sierra	94	19	20.4%	74	79.6%	93	0.7%	21	7.9
Socorro	167	18	11.5%	138	88.5%	156	1.1%	18	3.5
Taos	207	49	23.7%	158	76.3%	207	1.5%	71	9.7
Torrance	142	36	21.7%	130	78.3%	166	1.2%	45	8.8
Union	26	15	55.6%	12	44.4%	27	0.2%	19	16.7
Unknown	9	0	0.0%	0	0.0%	0	0.0%	0	0.0
Valencia	569	252	44.1%	319	55.9%	571	4.2%	398	20.0
State Totals	13,833	3,407	25.0%	10,200	75.0%	13,607	100.0%	4,985	9.7
Source: Sm06a01									

CPS Investigations (Annual) 2001 - 2008 CY

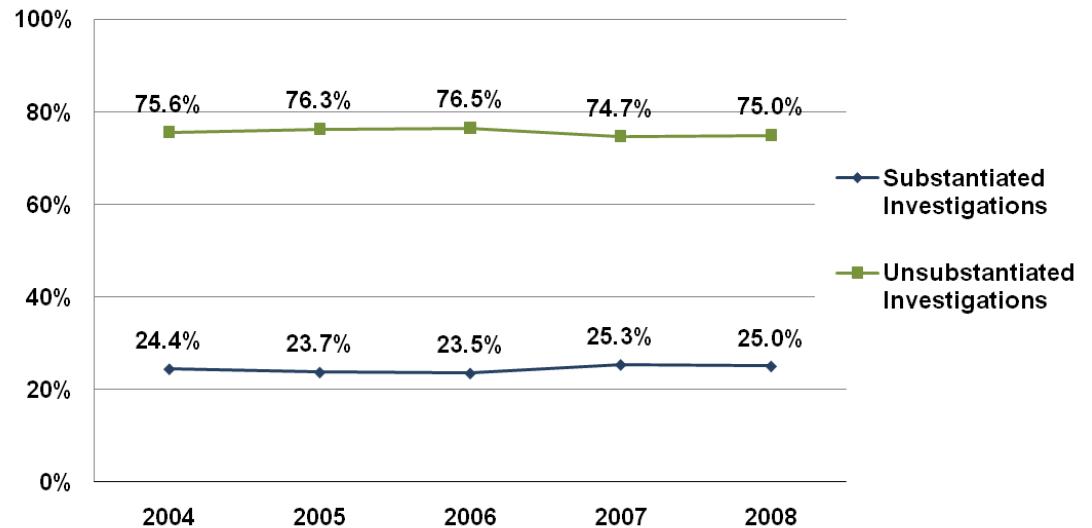


Notes:

1. Not all “accepted reports” result in investigations that are completed during the same period in which the corresponding report was accepted; therefore, completed investigations will not match the number of accepted reports.
2. For each county in New Mexico this table shows the number and percentage of the total investigations by their investigation decisions.

3. “**Substantiated**” in a child abuse and/or neglect investigation means the victim(s) is under the age of 18, a caretaker/provider has been identified as the perpetrator and/or identified as failing to protect, and credible evidence exists to support the conclusion by the investigation worker that the child has been abused and/or neglected as defined by the New Mexico Children’s Code.
4. “**Unsubstantiated**” means that the information collected during the investigation does not support a finding that the child was abused and/or neglected as defined by the New Mexico Children Code.

CPS Investigations Percentages (Annual) 2001 - 2008 CY





CPS CHILD VICTIMS SUBJECT OF AN INVESTIGATION

Year	Substantiated	% Substantiated	Unsubstantiated	% Unsubstantiated	Total
2005	6,395	22.0%	22,684	78.0%	29,079
2006	5,280	22.4%	18,295	77.6%	23,575
2007	5,764	24.5%	17,784	75.5%	23,548
2008	4,870	24.4%	15,063	75.6%	19,933

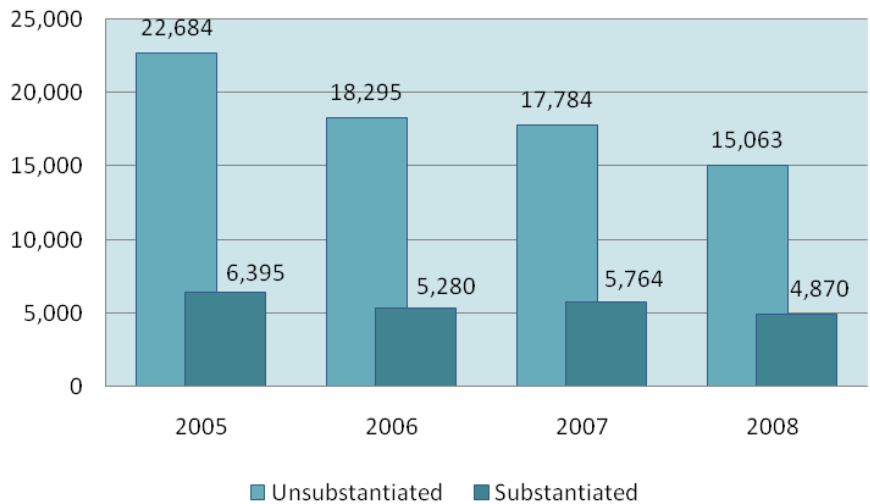
Source: Sm06a01

Note:

A single report may involve multiple children and multiple allegations. It is possible for all, some, or none of the allegations to be substantiated for one or more children in a report.

Further, multiple reports submitted during the same timeframe may be linked to an investigation.

Children Subject of an Investigation



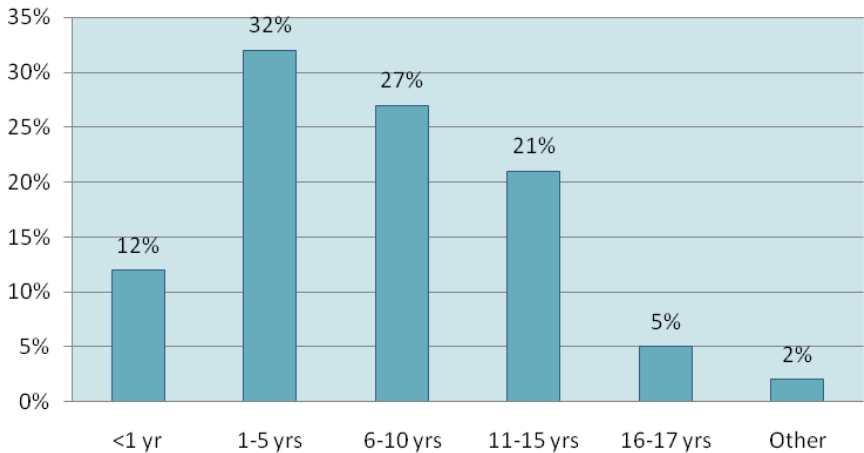
Source: SM0907

Notes:

The ages of maltreatment victims is displayed for the current reporting period as a percentage.

The age category "Other" is comprised of children whom, at the time of the PS report/referral, the recorder did **not** have specific information related to the children's age.

Age of Child Victims January - December 2008



Source: SM0907

CPS ALLEGATION TYPES CHILD ABUSE & NEGLECT

CHILD ABUSE & NEGLECT PERCENT OF TOTAL RECEIVED¹

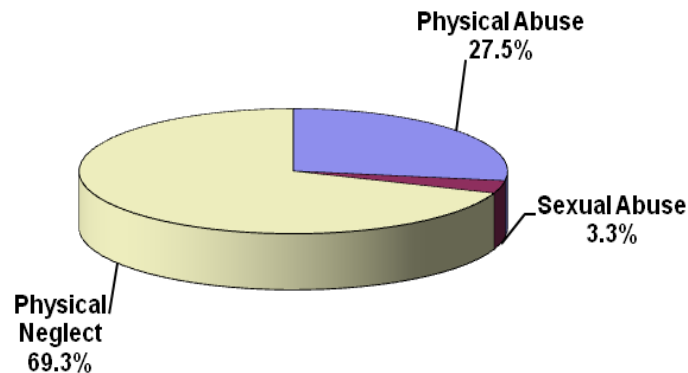
	ALLEGATIONS/2008					
	Substantiated		Unsubstantiated		Total	
	#	%	#	%	#	%
Physical Abuse	1,875	22.2%	8,124	29.1%	9,999	27.5%
Sexual Abuse	260	3.1%	929	3.3%	1,189	3.3%
Physical Neglect	6,297	74.7%	18,903	67.6%	25,200	69.3%
Totals	8,432	100%	27,956	100%	36,388	100%

Source: Sm06a01

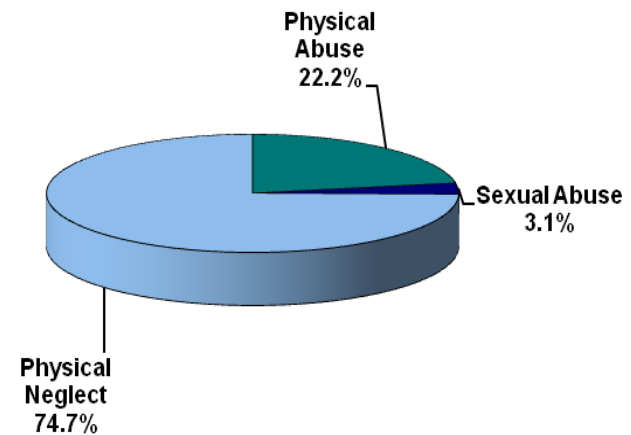
1. Note:

Among the CPS Investigations conducted during the Calendar 2008 year, there were multiple children and CPS allegation types. This resulted in a total of 36,388 allegations, including both substantiated and unsubstantiated reports incorporated into subsequent investigations.

Total Allegations,
Substantiated and Unsubstantiated
2008



Percent of Substantiated Allegations
2008



CPS ALLEGATION TYPES BY COUNTY (ANNUAL)

JANUARY - DECEMBER 2008

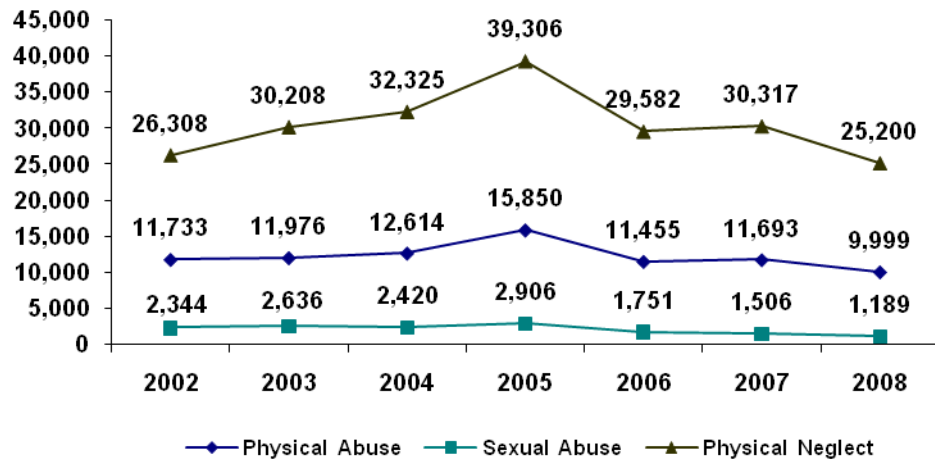
County	Physical Abuse					Sexual Abuse					Physical Neglect					Total Allegation Types				
	Total	Sub ¹		Unsub ²		Total	Sub		Unsub		Total	Sub		Unsub		Total	Sub		Unsub	
		#	%	#	%		#	%	#	%		#	%	#	%		#	%	#	%
Bernalillo E	1,421	223	15.7%	1,198	84.3%	156	41	26.3%	115	73.7%	3,415	701	20.5%	2,714	79.5%	4,992	965	19.3%	4,027	80.7%
Bernalillo W	1,506	162	10.8%	1,344	89.2%	189	34	18.0%	155	82.0%	3,520	561	15.9%	2,959	84.1%	5,215	757	14.5%	4,458	85.5%
Catron	5	4	80.0%	1	20.0%	1	1	100.0%	0	0.0%	15	4	26.7%	11	73.3%	21	9	42.9%	12	57.1%
Chaves	468	135	28.8%	333	71.2%	42	10	23.8%	32	76.2%	1,314	479	36.5%	835	63.5%	1,824	624	34.2%	1,200	65.8%
Cibola	123	43	35.0%	80	65.0%	14	3	21.4%	11	78.6%	300	82	27.3%	218	72.7%	437	128	29.3%	309	70.7%
Colfax	86	15	17.4%	71	82.6%	9	2	22.2%	7	77.8%	235	50	21.3%	185	78.7%	330	67	20.3%	263	79.7%
Curry	285	69	24.2%	216	75.8%	36	13	36.1%	23	63.9%	860	326	37.9%	534	62.1%	1,181	408	34.5%	773	65.5%
De Baca	19	3	15.8%	16	84.2%	3	0	0.0%	3	100.0%	30	9	30.0%	21	70.0%	52	12	23.1%	40	76.9%
Dofia Ana	1,301	148	11.4%	1,153	88.6%	163	37	22.7%	126	77.3%	3,094	810	26.2%	2,284	73.8%	4,558	995	21.8%	3,563	78.2%
Eddy	363	75	20.7%	288	79.3%	43	14	32.6%	29	67.4%	1,012	247	24.4%	765	75.6%	1,418	336	23.7%	1,082	76.3%
Grant	185	27	14.6%	158	85.4%	29	0	0.0%	29	100.0%	497	73	14.7%	424	85.3%	711	100	14.1%	611	85.9%
Guadalupe	19	12	63.2%	7	36.8%	2	0	0.0%	2	100.0%	70	28	40.0%	42	60.0%	91	40	44.0%	51	56.0%
Harding	1	1	100.0%	0	0.0%	0	0	0.0%	0	0.0%	0	0	0.0%	0	0.0%	1	1	100.0%	0	0.0%
Hidalgo	36	9	25.0%	27	75.0%	2	0	0.0%	2	100.0%	104	28	26.9%	76	73.1%	142	37	26.1%	105	73.9%
Lea	340	114	33.5%	226	66.5%	47	13	27.7%	34	72.3%	1,131	395	34.9%	736	65.1%	1,518	522	34.4%	996	65.6%
Lincoln	61	23	37.7%	38	62.3%	14	3	21.4%	11	78.6%	253	71	28.1%	182	71.9%	328	97	29.6%	231	70.4%
Los Alamos	31	7	22.6%	24	77.4%	2	0	0.0%	2	100.0%	66	10	15.2%	56	84.8%	99	17	17.2%	82	82.8%
Luna	120	24	20.0%	96	80.0%	11	2	18.2%	9	81.8%	318	100	31.4%	218	68.6%	449	126	28.1%	323	71.9%
McKinley	224	62	27.7%	162	72.3%	17	5	29.4%	12	70.6%	593	187	31.5%	406	68.5%	834	254	30.5%	580	69.5%
Mora	16	1	6.3%	15	93.8%	1	0	0.0%	1	100.0%	27	3	11.1%	24	88.9%	44	4	9.1%	40	90.9%
Otero	288	52	18.1%	236	81.9%	28	10	35.7%	18	64.3%	828	225	27.2%	603	72.8%	1,144	287	25.1%	857	74.9%
Quay	102	53	52.0%	49	48.0%	12	5	41.7%	7	58.3%	272	116	42.6%	156	57.4%	386	174	45.1%	212	54.9%
Rio Arriba	172	50	29.1%	122	70.9%	15	2	13.3%	13	86.7%	465	159	34.2%	306	65.8%	652	211	32.4%	441	67.6%
Roosevelt	85	6	7.1%	79	92.9%	18	5	27.8%	13	72.2%	280	108	38.6%	172	61.4%	383	119	31.1%	264	68.9%
San Juan	640	100	15.6%	540	84.4%	74	16	21.6%	58	78.4%	1,526	246	16.1%	1,280	83.9%	2,240	362	16.2%	1,878	83.8%
San Miguel	193	51	26.4%	142	73.6%	29	9	31.0%	20	69.0%	494	159	32.2%	335	67.8%	716	219	30.6%	497	69.4%
Sandoval	437	43	9.8%	394	90.2%	40	4	10.0%	36	90.0%	955	131	13.7%	824	86.3%	1,432	178	12.4%	1,254	87.6%
Santa Fe	430	39	9.1%	391	90.9%	69	7	10.1%	62	89.9%	1,076	258	24.0%	818	76.0%	1,575	304	19.3%	1,271	80.7%
Sierra	57	9	15.8%	48	84.2%	9	1	11.1%	8	88.9%	149	23	15.4%	126	84.6%	215	33	15.3%	182	84.7%
Socorro	98	10	10.2%	88	89.8%	18	3	16.7%	15	83.3%	256	18	7.0%	238	93.0%	372	31	8.3%	341	91.7%
Taos	187	26	13.9%	161	86.1%	23	3	13.0%	20	87.0%	363	82	22.6%	281	77.4%	573	111	19.4%	462	80.6%
Torrance	138	25	18.1%	113	81.9%	27	2	7.4%	25	92.6%	313	68	21.7%	245	78.3%	478	95	19.9%	383	80.1%
Union	28	8	28.6%	20	71.4%	0	0	0.0%	0	0.0%	77	36	46.8%	41	53.2%	105	44	41.9%	61	58.1%
Valencia	534	246	46.1%	288	53.9%	46	15	32.6%	31	67.4%	1,292	504	39.0%	788	61.0%	1,872	765	40.9%	1,107	59.1%
State Totals	9,999	1,875	18.8%	8,124	81.2%	1,189	260	21.9%	929	78.1%	25,200	6,297	25.0%	18,903	75.0%	36,388	8,432	23.2%	27,956	76.8%

Source: Sm06a01 1. Sub = Substantiated 2. Unsub = Unsubstantiated

CPS ALLEGATION TYPE RESULTS (ANNUAL)

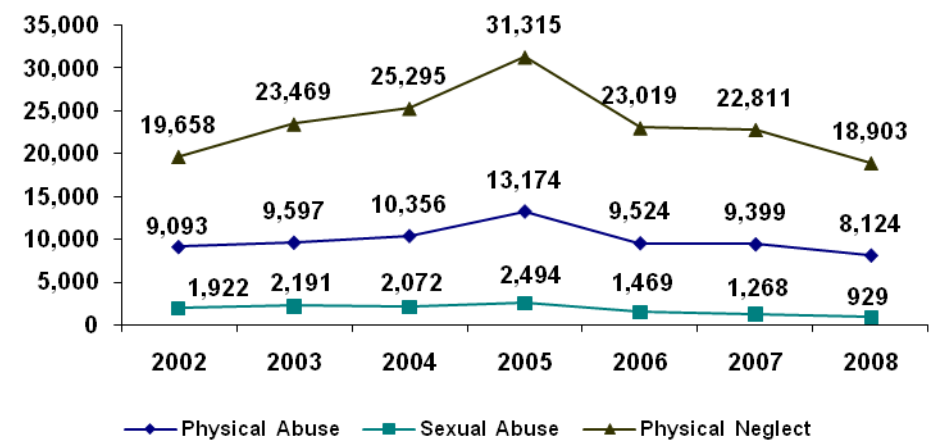
JANUARY - DECEMBER 2008

Total Allegations



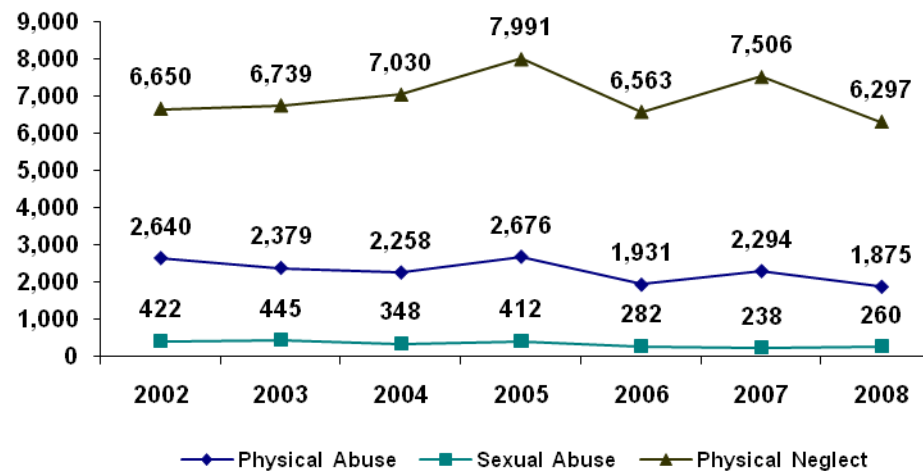
Source: SM06a01

Unsubstantiated Allegations



Source: SM06a01

Substantiated Allegations



Source: SM06a01

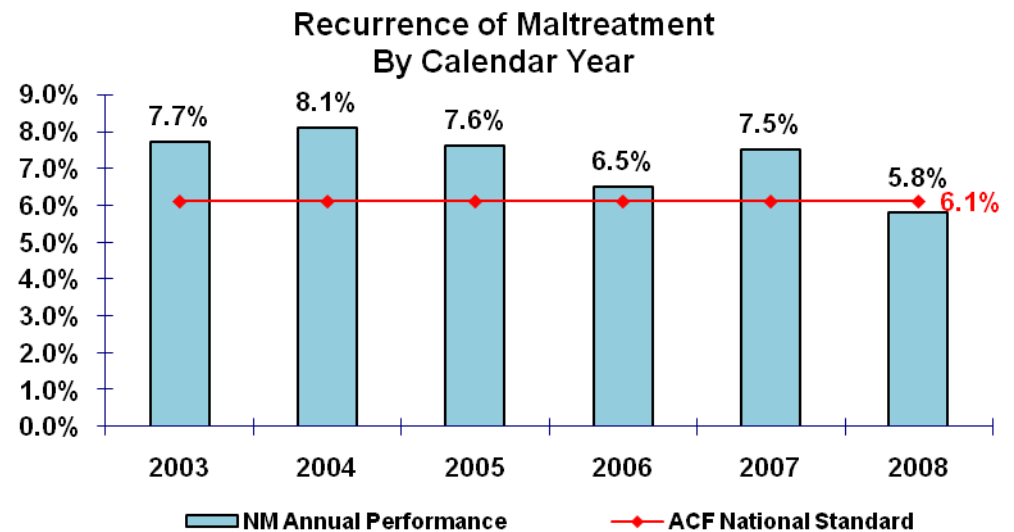
RECURRENCE OF SUBSTANTIATED MALTREATMENT WITHIN 6 MONTHS OF A PREVIOUSLY SUBSTANTIATED REPORT OF MALTREATMENT (ANNUAL)

January - December 2008			
County	Total # of Maltreatment Victims	# With Recurrence	% With Recurrence
Bernalillo East	554	34	6.1%
Bernalillo West	498	20	4.0%
Chaves	360	26	7.2%
Cibola	57	0	0.0%
Colfax	62	6	9.7%
Curry	241	23	9.5%
De Baca	0	0	0.0%
Doña Ana	517	34	6.6%
Eddy	221	8	3.6%
Grant	67	6	9.0%
Guadalupe	1	0	0.0%
Narding	0	0	0.0%
Hidalgo	5	0	0.0%
Lea	251	25	10.0%
Lincoln	56	6	10.7%
Los Alamos	4	0	0.0%
Luna	84	6	7.1%
McKinley	140	8	5.7%
Mora	0	0	0.0%
Otero	127	10	7.9%
Quay	97	7	7.2%
Rio Arriba	122	3	2.5%
Roosevelt	74	2	2.7%
San Juan	219	3	1.4%
San Miguel	148	4	2.7%
Sandoval	140	4	2.9%
Santa Fe	165	10	6.1%
Sierra	25	0	0.0%
Socorro	31	2	6.5%
Taos	58	0	0.0%
Torrance	55	4	7.3%
Union	4	0	0.0%
Valencia	370	24	6.5%
State Totals	4,753	275	5.8%

Source: Sm0907

Child and Family Services Review (CFSR) for the Administration for Child & Families (ACF) federal Performance Measure is at or below 6.1% for this CFSR Round 1 Measure.

The State Fiscal Year (SFY) 2008 Performance Measure is at or below 7.0%.



CHILDREN MALTREATED IN FOSTER CARE (PERFORMANCE OVER 12 MONTHS)

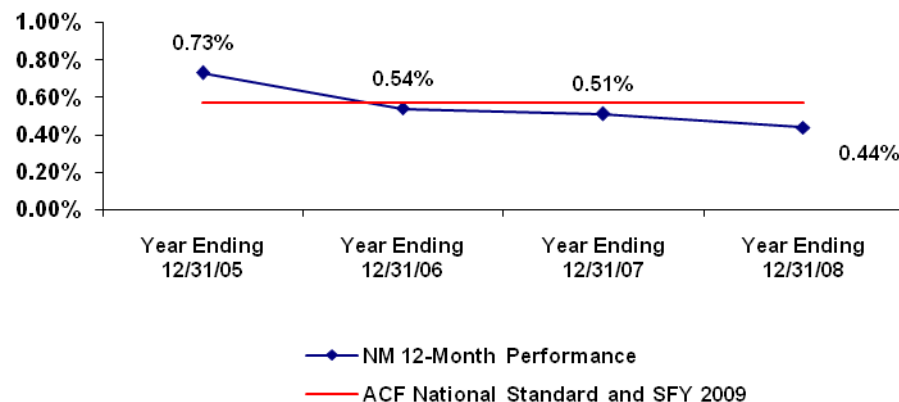
12 months ending on December 31, 2008			
County	Total # of Children in Care	# Mal-treated	%
Bernalillo East	552	2	0.36%
Bernalillo West	421	0	0.00%
Chaves	330	5	1.52%
Cibola	61	1	1.64%
Colfax	36	0	0.00%
Curry	121	0	0.00%
De Baca	0	0	0.00%
Dona Ana	427	1	0.23%
Eddy	136	1	0.74%
Grant	92	1	1.09%
Guadalupe	3	0	0.00%
Harding	0	0	0.00%
Hidalgo	0	0	0.00%
Lea	160	2	1.25%
Lincoln	37	0	0.00%
Los Alamos	4	0	0.00%
Luna	86	1	1.16%
McKinley	174	1	0.57%
Otero	84	0	0.00%
Placement Wkr	697	0	0.00%
Quay	60	0	0.00%
Rio Arriba	81	0	0.00%
Roosevelt	65	0	0.00%
San Juan	320	5	1.56%
San Miguel	101	0	0.00%
Sandoval	81	0	0.00%
Santa Fe	119	0	0.00%
Sierra	27	0	0.00%
Socorro	25	0	0.00%
Taos	73	0	0.00%
Torrance	31	0	0.00%
Union	1	0	0.00%
Valencia	157	0	0.00%
State Totals	4,562	20	0.44%

Source: Sm0907

Child and Family Services Review (CFSR) for the Administration for Child & Families (ACF) federal Performance Measure is at or below 0.57% for this CFSR Round 1 Measure.

The State Fiscal Year (SFY) 2008 Performance Measure is at or below 0.57%.

Children Maltreated in Foster Care
(Performance over 12 Months)



Source: SM0907



Adopt a New Mexico Child
Foster a future!

Photos by Gene Peach



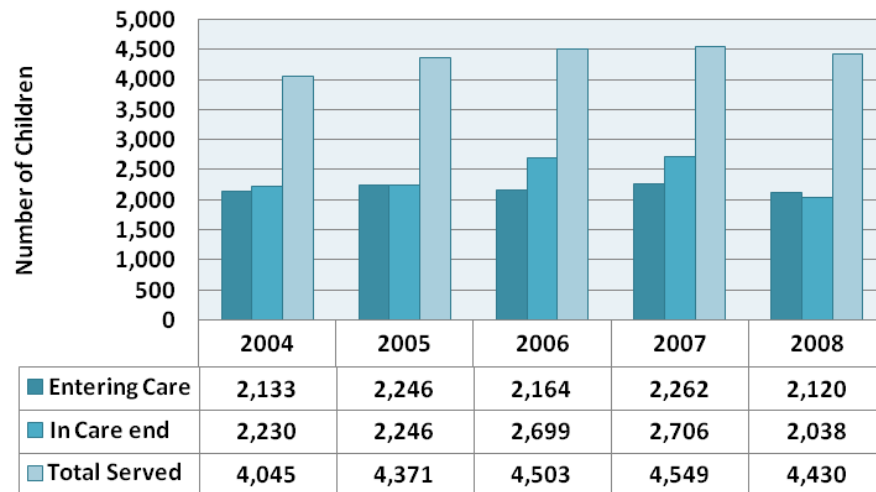
PERMANENCY

CHILDREN IN FOSTER CARE

	January - December 2008				
	In Care (Start)	Entered Care	Exited Care	In Care (End)	Total Served
Children	2,310	2,120	2,403	2,038	4,430
Median length of stay (in Months)	21.8		3.8	14.4	
Mean length of stay (in Months)	26.7		11.7	19.6	

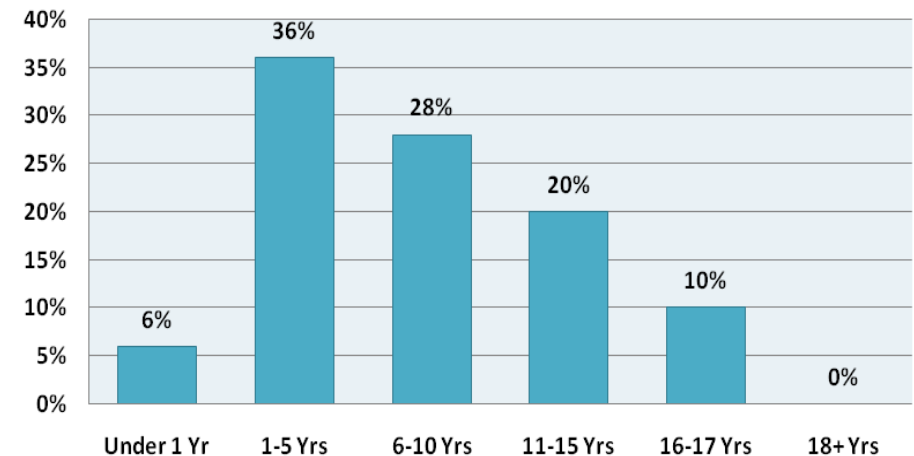
This count includes children who entered care during the reporting period or those who exited care during the reporting period

Trend of Children Entering and Served during CY 2008



Source: SM0907

Age of Children in Foster Care As of December 31, 2008



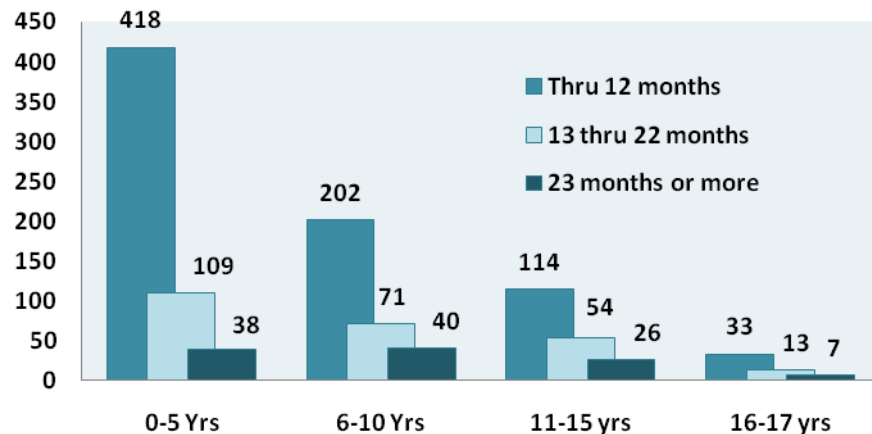
Source: SM0907

PERMANENCY PLAN GOALS OF ALL CHILDREN IN CUSTODY ANNUAL 2008

TYPE OF PLAN	# OF CHILDREN	%
Planned Permanent Living Arrangement	253	5.6%
Reunification	1,762	39.0%
Adoption	1,329	29.4%
Permanent Guardianship	33	0.7%
Placement with a Fit & Willing Relative	11	0.2%
No Plan	1,133	25.1%
Total	4,521	100.0%

Source: Sm0904 Annual 2008 (Cumulative)

Children In Care With A Goal of Reunification
Point in Time December 31, 2008



Source: AFCARS data ending 12/31/2008 (Point In Time)

Children With A Plan of Reunification				Total
County	12 months or less	13 to 23 months	23 months or more	
Cibola	11	4	2	17
McKinley	32	1	0	33
San Juan	43	29	5	77
Sandoval	13	7	2	22
Torrance	9	0	0	9
Valencia	30	14	11	55
Region 1 Total	138	55	20	213
Colfax	8	4	0	12
Guadalupe	0	3	0	3
Los Alamos	1	1	0	2
Rio Arriba	28	1	0	29
San Miguel	16	1	0	17
Santa Fe	24	5	2	31
Taos	13	10	3	26
Region 2 Total	90	25	5	120
Bernalillo	205	47	17	269
Region 3 Total	205	47	17	269
Chaves	64	12	2	78
Curry	31	3	5	39
Eddy	47	12	3	62
Lea	44	16	4	64
Quay	11	10	0	21
Roosevelt	13	3	0	16
Region 4 Total	210	56	14	280
Catron	0	0	2	2
Dona Ana	54	30	29	113
Grant	10	5	7	22
Hidalgo	3	3	0	6
Lincoln	11	0	2	13
Luna	16	1	7	24
Otero	22	8	9	39
Sierra	6	6	0	12
Socorro	2	11	0	13
Region 5 Total	124	64	56	244
Out of State	0	0	3	3
New Mexico	767	247	115	1,129

Source: AFCARS data ending 12/31/08 (Point In Time)

DEMOGRAPHICS OF CHILDREN WITH A PLAN OF ADOPTION

DECEMBER 31, 2008

Legal Statistics

During the calendar year 2008, 1,337 children had “adoption” as a permanency goal. As of December 31, 2008, 511 children were legally freed to be adopted. Of those legally freed, 222 children were in adoptive family homes and had an adoptive agreement signed and in effect.

Ethnicity

Of the 1,337 children with adoption plans, 58% are of Hispanic ethnicity, with 40% Non-Hispanic ethnicity, 2% are unknown.

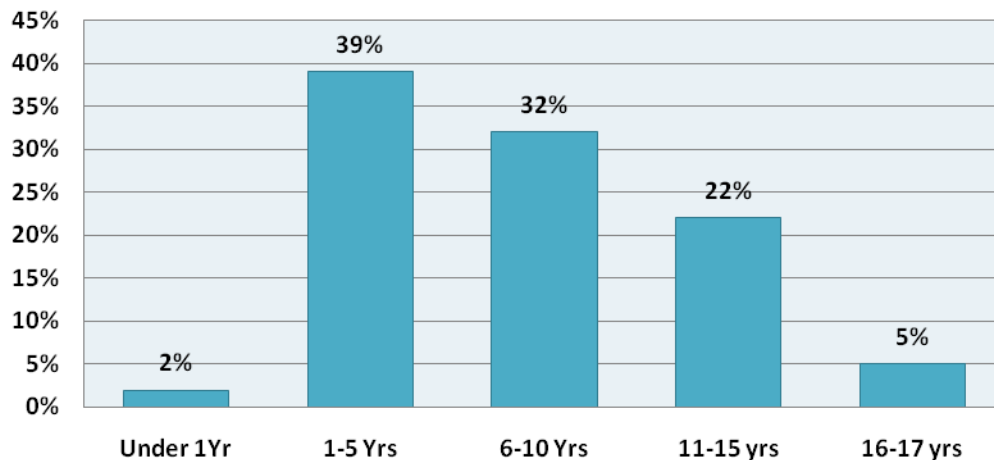
Gender

The gender distribution of children with adoption plans is 51% being male and 49% being female.

Source: SM0907

Age of Children with a Plan of Adoption

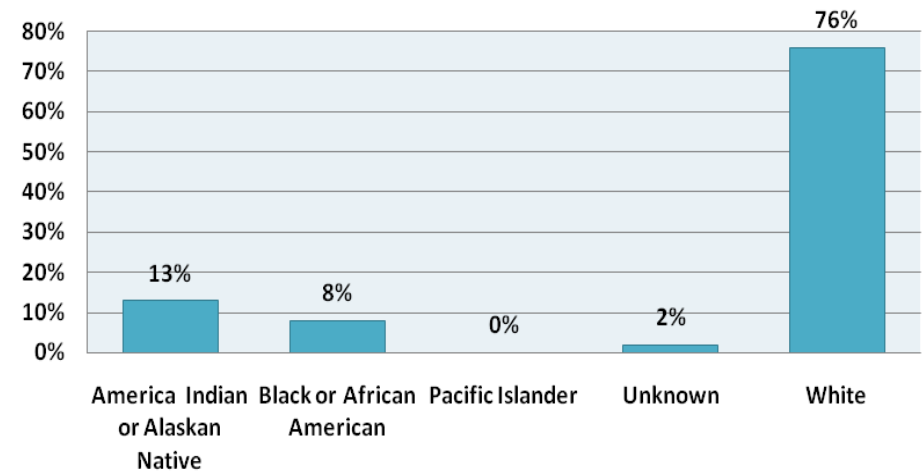
January 1, 2008 - December 31, 2008



Source: Sm0907

Race of Children with a Plan of Adoption

January 1, 2008 - December 31, 2008



Source: Sm0907

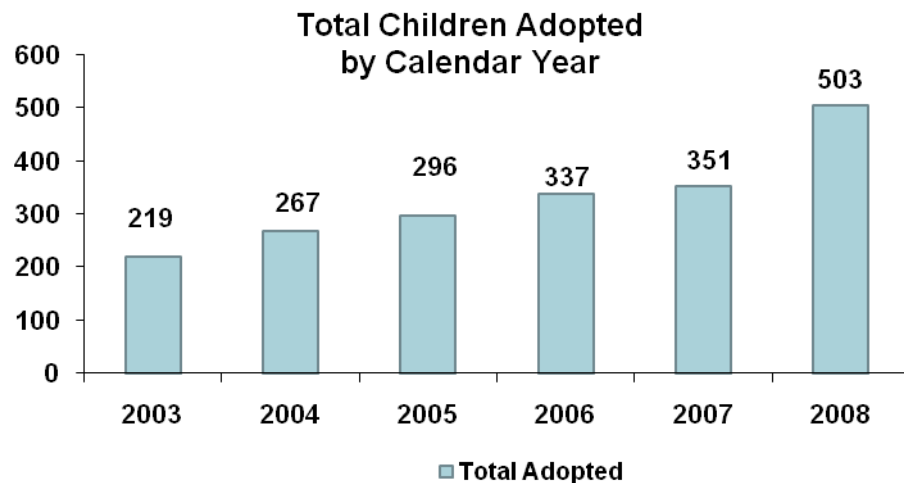
CHILDREN WITH A FINALIZED ADOPTION WITHIN 24 MONTHS OF ENTRY INTO CARE (ANNUAL)

January - December 2008			
County	Total #	# <24 mos.	%<24 mos.
Bernalillo East	47	14	29.8%
Bernalillo West	40	17	42.5%
Catron	2	0	0.0%
Chaves	31	10	32.3%
Cibola	12	0	0.0%
Colfax	2	2	100.0%
Curry	14	4	28.6%
De Baca	0	0	0.0%
Doña Ana	66	15	22.7%
Eddy	25	11	44.0%
Grant	10	1	10.0%
Guadalupe	0	0	0.0%
Hidalgo	0	0	0.0%
Lea	3	2	66.7%
Lincoln	5	3	60.0%
Los Alamos	2	2	100.0%
Luna	7	0	0.0%
McKinley	1	1	100.0%
Mora	0	0	0.0%
Otero	18	2	11.1%
Quay	7	0	0.0%
Rio Arriba	31	13	41.9%
Roosevelt	7	5	71.4%
San Juan	44	9	20.5%
San Miguel	16	4	25.0%
Sandoval	20	10	50.0%
Santa Fe	31	13	41.9%
Sierra	1	0	0.0%
Socorro	17	0	0.0%
Taos	15	12	80.0%
Torrance	7	0	0.0%
Union	2	1	50.0%
Valencia	20	3	15.0%
State Totals	503	154	30.6%

Source: Sm0907

Child and Family Services Review (CFSR) for the Administration for Child & Families (ACF) federal performance Measure is at or above 32.0% for this CFSR Round 1 Measure.

The State Fiscal Year (SFY) 2009 Performance Measure is at or above 34.0%.



Source: Sm0907

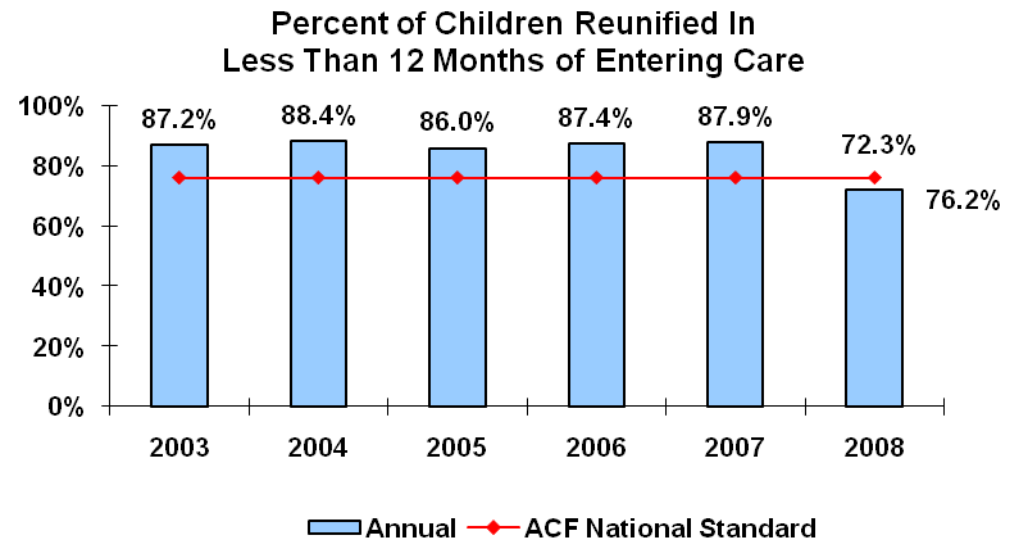
CHILDREN REUNIFIED IN LESS THAN TWELVE MONTHS OF ENTRY INTO CARE (ANNUAL)

January - December 2008			
County	Total # Reunified	# Reunified Less than 12 mos	% Reunified Less than 12 mos
Bernalillo East	244	190	77.9%
Bernalillo West	153	125	81.7%
Chaves	174	120	69.0%
Cibola	16	3	18.8%
Colfax	18	18	100.0%
Curry	57	25	43.9%
DeBaca	0	0	0.0%
Doña Ana	232	187	80.6%
Eddy	39	27	69.2%
Grant	48	39	81.3%
Guadalupe	0	0	0.0%
Harding	0	0	0.0%
Hidalgo	0	0	0.0%
Lea	53	32	60.4%
Lincoln	18	15	83.3%
Los Alamos	1	0	0.0%
Luna	42	31	73.8%
McKinley	91	69	75.8%
Mora	0	0	0.0%
Otero	29	14	48.3%
Quay	15	5	33.3%
Rio Arriba	14	11	78.6%
Roosevelt	19	11	57.9%
San Juan	147	97	66.0%
San Miguel	52	31	59.6%
Sandoval	38	27	71.1%
Santa Fe	60	47	78.3%
Sierra	7	7	100.0%
Socorro	6	5	83.3%
Taos	22	12	54.5%
Torrance	16	15	93.8%
Union	0	0	0.0%
Valencia	19	15	78.9%
State Totals	1630	1178	72.3%

Source: Sm0907

Child and Family Services Review (CFSR) for the Administration for Child & Families (ACF) federal performance Measure is at or above 76.2% for this CFSR Round 1 Measure.

The State Fiscal Year (SFY) 2009 Performance Measure is at or above 79.0%



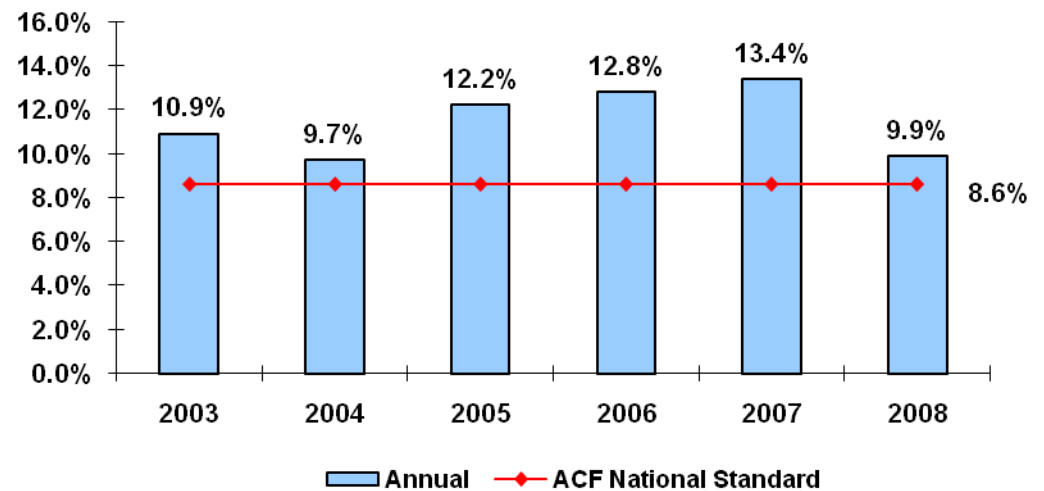
CHILDREN REENTERING CARE WITHIN TWELVE MONTHS OF A PRIOR EPISODE (ANNUAL)

January – December 2008			
County	Total Entering Care #	# Reentering Within 12 Months	% Reentering Within 12 Months
Bernalillo East	335	45	13.4%
Bernalillo West	239	8	3.3%
Chaves	186	25	13.4%
Cibola	16	1	6.3%
Colfax	22	0	0.0%
Curry	55	5	9.1%
DeBaca	0	0	0.0%
Doña Ana	249	21	8.4%
Eddy	69	8	11.6%
Grant	52	6	11.5%
Guadalupe	0	0	0.0%
Harding	0	0	0.0%
Hidalgo	0	0	0.0%
Lea	79	9	11.4%
Lincoln	24	2	8.3%
Los Alamos	3	0	0.0%
Luna	51	5	9.8%
McKinley	148	17	11.5%
Mora	0	0	0.0%
Otero	44	7	15.9%
Quay	20	2	10.0%
Rio Arriba	34	5	14.7%
Roosevelt	23	0	0.0%
San Juan	151	14	9.3%
San Miguel	62	7	11.3%
Sandoval	41	9	22.0%
Santa Fe	69	4	5.8%
Sierra	15	1	6.7%
Socorro	9	2	22.2%
Taos	26	2	7.7%
Torrance	19	1	5.3%
Union	0	0	0.0%
Valencia	64	2	3.1%
State Totals	2,105	208	9.9%

Source: Sm0907

Child and Family Services Review (CFSR) for the Administration for Child & Families (ACF) federal performance Measure is at or below 8.6% for this CFSR Round 1 Measure.

Percent Children Reentering Care within 12 Months
By Calendar Year



CHILDREN IN CARE WITH NO MORE THAN TWO PLACEMENTS (ANNUAL)

January - December 2008

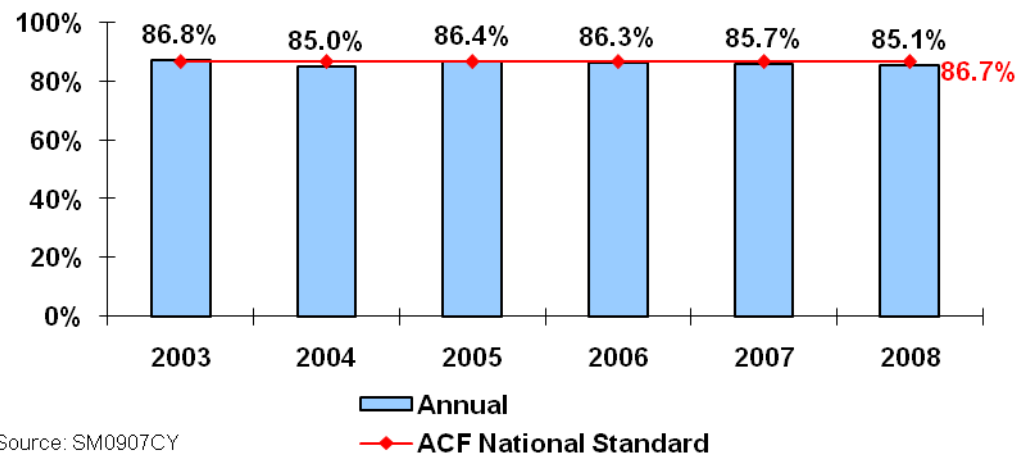
County	Total	# With Two or Fewer	% With Two or
Bernalillo East	364	322	88.5%
Bernalillo West	271	224	82.7%
Catron	0	0	0.0%
Chaves	223	174	78.0%
Cibola	22	16	72.7%
Colfax	26	24	92.3%
Curry	72	50	69.4%
DeBaca	0	0	0.0%
Doña Ana	293	252	86.0%
Eddy	82	59	72.0%
Grant	57	54	94.7%
Guadalupe	0	0	0.0%
Harding	0	0	0.0%
Hidalgo	0	0	0.0%
Lea	100	81	81.0%
Lincoln	29	25	86.2%
Los Alamos	4	3	75.0%
Luna	54	42	77.8%
McKinley	161	155	96.3%
Mora	0	0	0.0%
Otero	58	47	81.0%
Quay	31	23	74.2%
Rio Arriba	39	30	76.9%
Roosevelt	35	24	68.6%
San Juan	182	160	87.9%
San Miguel	70	66	94.3%
Sandoval	68	54	79.4%
Santa Fe	86	78	90.7%
Sierra	17	16	94.1%
Socorro	14	14	100.0%
Taos	37	33	89.2%
Torrance	23	23	100.0%
Union	0	0	0.0%
Valencia	68	67	98.5%
State Totals	2,486	2,116	85.1%

Source: Sm0907

Child and Family Services Review (CFSR) for the Administration for Child & Families (ACF) federal performance Measure is at or above 86.7% for this CFSR Round 1 Measure.

The State Fiscal Year (SFY) 2009 Performance Measure is at or Above 83.3%.

Children In Care With No More Than Two Placements
By Calendar Year



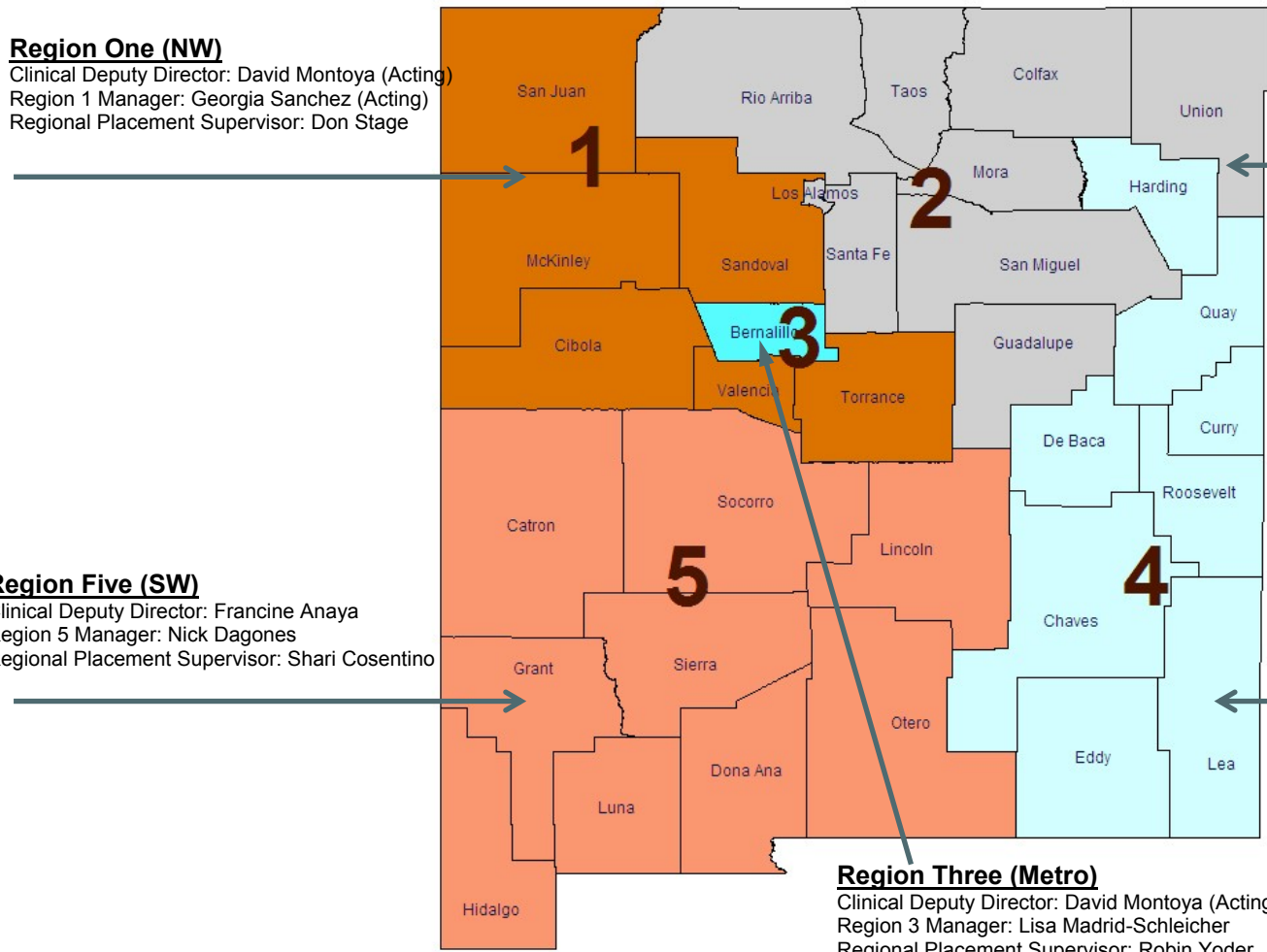
Source: SM0907CY



CYFD REGION MANAGEMENT STRUCTURE

Region One (NW)

Clinical Deputy Director: David Montoya (Acting)
Region 1 Manager: Georgia Sanchez (Acting)
Regional Placement Supervisor: Don Stage



Region Two (NE)

Clinical Deputy Director: Francine Anaya
Region 2 Manager: Linda McNall
Regional Placement Supervisor: Christine Archuleta

Region Five (SW)

Clinical Deputy Director: Francine Anaya
Region 5 Manager: Nick Dagonés
Regional Placement Supervisor: Shari Cosentino

Region Four (SE)

Clinical Deputy Director: Francine Anaya
Region 4 Manager: Don Holden
Regional Placement Supervisor: Marsha Buesgens

Region Three (Metro)

Clinical Deputy Director: David Montoya (Acting)
Region 3 Manager: Lisa Madrid-Schleicher
Regional Placement Supervisor: Robin Yoder

REGION ONE (NW)

JANUARY – DECEMBER 2008

CPS Reports Of Abuse And Neglect						
County	Accepted		Not Accepted		Total	County % of State Total Reports
	#	%	#	%	#	
Cibola	161	43.8%	207	56.3%	368	1.2%
McKinley	325	45.7%	386	54.3%	711	2.3%
San Juan	779	46.1%	909	53.9%	1,688	5.5%
Sandoval	689	42.9%	916	57.1%	1,605	5.2%
Torrance	142	46.1%	166	53.9%	308	1.0%
Valencia	569	44.5%	709	55.5%	1,278	4.2%
Region Totals	2,665	44.7%	3,293	55.3%	5,958	19.4%
State Totals	13,833	45.0%	16,900	55.0%	30,733	100.0%

Source: Sm01a02

CPS Investigations									
County	Accepted Reports	Substantiated		Unsubstantiated		Total	County % of State Total Investigations	Number of Substantiated Child Victims	Victim Rate per 1,000
		#	%	#	%	#			
Cibola	161	59	39.1%	92	60.9%	151	1.1%	201	25.6
McKinley	325	113	33.4%	225	66.6%	338	2.5%	158	5.6
San Juan	779	151	19.4%	629	80.6%	780	5.7%	213	5.7
Sandoval	689	88	15.0%	499	85.0%	587	4.3%	118	4.4
Torrance	142	36	21.7%	130	78.3%	166	1.2%	45	8.8
Valencia	569	252	44.1%	319	55.9%	571	4.2%	398	20.0
Region Totals	2,665	699	27.0%	1,894	73.0%	2,593	19.1%	1,133	9.1
State Totals	13,833	3,407	25.0%	10,200	75.0%	13,607	100.0%	4,985	9.7

Source: Sm06a01



REGION ONE (NW)

JANUARY – DECEMBER 2008

CPS Allegation Types																				
County	Physical Abuse					Sexual Abuse					Physical Neglect					Totals				
		Sub		Unsub			Sub		Unsub			Sub		Unsub			Sub		Unsub	
	Total	#	%	#	%	Total	#	%	#	%	Total	#	%	#	%	Total	#	%	#	%
Cibola	123	43	35.0%	80	65.0%	14	3	21.4%	11	78.6%	300	82	27.3%	218	72.7%	437	128	29.3%	309	70.7%
McKinley	224	62	27.7%	162	72.3%	17	5	29.4%	12	70.6%	593	187	31.5%	406	68.5%	834	254	30.5%	580	69.5%
San Juan	640	100	15.6%	540	84.4%	74	16	21.6%	58	78.4%	1,526	246	16.1%	1,280	83.9%	2,240	362	16.2%	1,878	83.8%
Sandoval	437	43	9.8%	394	90.2%	40	4	10.0%	36	90.0%	955	131	13.7%	824	86.3%	1,432	178	12.4%	1,254	87.6%
Torrance	138	25	18.1%	113	81.9%	27	2	7.4%	25	92.6%	313	68	21.7%	245	78.3%	478	95	19.9%	383	80.1%
Valencia	534	246	46.1%	288	53.9%	46	15	32.6%	31	67.4%	1,292	504	39.0%	788	61.0%	1,872	765	40.9%	1,107	59.1%
Region Totals	2,096	519	24.8%	1,577	75.2%	218	45	20.6%	173	79.4%	4,979	1,218	24.5%	3,761	75.5%	7,293	1,782	24.4%	5,511	75.6%
State Totals	9,999	1,875	18.8%	8,124	81.2%	1,189	260	21.9%	929	78.1%	25,200	6,297	25.0%	18,903	75.0%	36,388	8,432	23.2%	27,956	76.8%

Source: Sm06a01

Recurrence of Substantiated Maltreatment Within 6 Months of A Previously Substantiated Report of Maltreatment			
County	Total # of Maltreatment Victims	# With Recurrence	% With Recurrence
Cibola	57	0	0.0%
McKinley	140	8	5.7%
San Juan	219	3	1.4%
Sandoval	140	4	2.9%
Torrance	55	4	7.3%
Valencia	370	24	6.5%
Region Totals	981	43	4.4%
State Totals	4,753	275	5.8%
National Standard—No more than			6.1%
SFY 09 State Standard—No more than			7.0%

Source: Sm0907

Children Maltreated In Foster Care (Performance Over 12 Months)			
County	Total # of Children in Care	# Maltreated	%
Cibola	61	1	1.64%
McKinley	174	1	0.57%
San Juan	320	5	1.56%
Sandoval	81	0	0.00%
Torrance	31	0	0.00%
Valencia	157	0	0.00%
Region Totals	824	7	0.85%
State Totals	4,562	20	0.44%
National Standard—No more than			0.57%
SFY 09 State Standard—No more than			0.57%

Source: Sm0907

REGION ONE (NW)

JANUARY – DECEMBER 2008

Children With A Finalized Adoption Within 24 Months of Entry Into Care			
County	Total # Adopted	# <24 Months	%
Cibola	12	0	0.0%
McKinley	1	1	100.0%
San Juan	44	9	20.5%
Sandoval	20	10	50.0%
Torrance	7	0	0.0%
Valencia	20	3	15.0%
Region Totals	104	23	22.1%
State Totals	503	154	30.6%
National Standard—At least			32.0%
SFY 09 State Standard—At least			26.8%

Source: SM0907

Children Reentering Care Within Twelve Months Of A Prior Episode			
County	Total Entering Care #	# Reentering within 12 months	% Reentering within 12 months
Cibola	16	1	6.3%
McKinley	148	17	11.5%
San Juan	151	14	9.3%
Sandoval	41	9	22.0%
Torrance	19	1	5.3%
Valencia	64	2	3.1%
Region Totals	439	44	10.0%
State Totals	2,105	208	9.9%
National Standard—At or below			8.6%

Source: Sm0907

Children Reunified In Less Than Twelve Months Of Entry Into Care			
County	Total # Reunified	# Reunified less than 12 Months	% Reunified less than 12 Months
Cibola	16	3	18.8%
McKinley	91	69	75.8%
San Juan	147	97	66.0%
Sandoval	38	27	71.1%
Torrance	16	15	93.8%
Valencia	19	15	78.9%
Region Totals	327	226	69.1%
State Totals	1,630	1,178	72.3%
National Standard—At least			76.2%
SFY 09 State Standard—At least			78.0%

Source: Sm0907

Children In Care For Twelve Months With No More Than 2 Placements			
County	Total	# With Two or Fewer	% With Two or Fewer
Cibola	22	16	72.7%
McKinley	161	155	96.3%
San Juan	182	160	87.9%
Sandoval	68	54	79.4%
Torrance	23	23	100.0%
Valencia	68	67	98.5%
Region Totals	524	475	90.6%
State Totals	2,486	2,116	85.1%
National Standard—At least			86.7%
SFY 09 State Standard—At least			83.3%

Source: Sm0907

REGION TWO (NE)

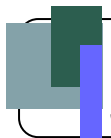
JANUARY – DECEMBER 2008

CPS Reports Of Abuse And Neglect						
County	Accepted		Not Accepted		Total	County % of State Total Reports
	#	%	#	%	#	
Colfax	135	0	153	1	288	0
Guadalupe	36	0	43	1	79	0
Los Alamos	42	0	65	1	107	0
Mora	18	0	34	1	52	0
Rio Arriba	228	0	326	1	554	0
San Miguel	267	0	290	1	557	0
Santa Fe	686	0	924	1	1,610	0
Taos	207	0	277	1	484	0
Union	26	0	41	1	67	0
Region Totals	1,645	43.3%	2,153	56.7%	3,798	12.4%
State Totals	13,833	45.0%	16,900	55.0%	30,733	100.0%

Source: Sm01a02

CPS Investigations									
County	Accepted Reports	Substantiated		Unsubstantiated		Total	County % of State Total Investigations	Number of Substantiated Child Victims	Victim Rate per 1,000
		#	%	#	%	#			
Colfax	135	32	24.1%	101	75.9%	133	1.0%	40	11.2
Guadalupe	36	14	46.7%	16	53.3%	30	0.2%	23	18.7
Los Alamos	42	11	23.9%	35	76.1%	46	0.3%	12	2.5
Mora	18	3	20.0%	12	80.0%	15	0.1%	3	2.2
Rio Arriba	228	68	28.7%	169	71.3%	237	1.7%	101	8.6
San Miguel	267	97	35.4%	177	64.6%	274	2.0%	120	14.5
Santa Fe	686	131	20.1%	521	79.9%	652	4.8%	175	5.6
Taos	207	49	23.7%	158	76.3%	207	1.5%	71	9.7
Union	26	15	55.6%	12	44.4%	27	0.2%	19	16.7
Region Totals	1,645	420	25.9%	1,201	74.1%	1,621	11.9%	564	8.0
State Totals	13,833	3,407	25.0%	10,200	75.0%	13,607	100.0%	4,985	9.7

Source: Sm06a01



REGION TWO (NE)

JANUARY – DECEMBER 2008

CPS Allegation Types

County	Physical Abuse					Sexual Abuse					Physical Neglect					Totals				
	Sub		Unsub			Sub		Unsub			Sub		Unsub			Sub		Unsub		
	Total	#	%	#	%	Total	#	%	#	%	Total	#	%	#	%	Total	#	%	#	%
Colfax	86	15	17.4%	71	82.6%	9	2	22.2%	7	77.8%	235	50	21.3%	185	78.7%	330	67	20.3%	263	79.7%
Guadalupe	19	12	63.2%	7	36.8%	2	0	0.0%	2	100.0%	70	28	40.0%	42	60.0%	91	40	44.0%	51	56.0%
Los Alamos	31	7	22.6%	24	77.4%	2	0	0.0%	2	100.0%	66	10	15.2%	56	84.8%	99	17	17.2%	82	82.8%
Mora	16	1	6.3%	15	93.8%	1	0	0.0%	1	100.0%	27	3	11.1%	24	88.9%	44	4	9.1%	40	90.9%
Rio Arriba	172	50	29.1%	122	70.9%	15	2	13.3%	13	86.7%	465	159	34.2%	306	65.8%	652	211	32.4%	441	67.6%
San Miguel	193	51	26.4%	142	73.6%	29	9	31.0%	20	69.0%	494	159	32.2%	335	67.8%	716	219	30.6%	497	69.4%
Santa Fe	430	39	9.1%	391	90.9%	69	7	10.1%	62	89.9%	1,076	258	24.0%	818	76.0%	1,575	304	19.3%	1,271	80.7%
Taos	187	26	13.9%	161	86.1%	23	3	13.0%	20	87.0%	363	82	22.6%	281	77.4%	573	111	19.4%	462	80.6%
Union	28	8	28.6%	20	71.4%	0	0	0.0%	0	0.0%	77	36	46.8%	41	53.2%	105	44	41.9%	61	58.1%
Region Totals	1,162	209	18.0%	953	82.0%	150	23	15.3%	127	84.7%	2,873	785	27.3%	2,088	72.7%	4,185	1,017	24.3%	3,168	75.7%
State Totals	9,999	1,875	18.8%	8,124	81.2%	1,189	260	21.9%	929	78.1%	25,200	6,297	25.0%	18,903	75.0%	36,388	8,432	23.2%	27,956	76.8%

Source: SM06a01

Recurrence of Substantiated Maltreatment Within 6 Months of A Previously Substantiated Report of Maltreatment			
County	Total # of Maltreatment Victims	# With Recurrence	% With Recurrence
Colfax	62	6	9.7%
Guadalupe	1	0	0.0%
Los Alamos	4	0	0.0%
Rio Arriba	122	3	2.5%
San Miguel	148	4	2.7%
Santa Fe	165	10	6.1%
Taos	58	0	0.0%
Union	4	0	0.0%
Region Totals	564	23	4.1%
State Totals	4,753	275	5.8%
National Standard—No more than			6.1%
SYF 09 State Standard—No more than			7.0%

Source: Sm0907

Children Maltreated In Foster Care (Performance Over 12 Months)			
County	Total # of Children in Care	# Maltreated	%
Colfax	36	0	0.00%
Guadalupe	3	0	0.00%
Los Alamos	4	0	0.00%
Rio Arriba	81	0	0.00%
San Miguel	101	0	0.00%
Santa Fe	119	0	0.00%
Taos	73	0	0.00%
Union	1	0	0.00%
Region Totals	418	0	0.00%
State Totals	4,562	20	0.44%
National Standard—No more than			0.57%
SFY 09 State Standard—No more than			0.57%

Source: Sm0907

REGION TWO (NE)

JANUARY – DECEMBER 2008

Children With A Finalized Adoption Within 24 Months Of Entry Into Care

County	Total # Adopted	# <24 Months	%
Colfax	2	2	100.0%
Guadalupe	0	0	0.0%
Los Alamos	2	2	100.0%
Rio Arriba	31	13	41.9%
San Miguel	16	4	25.0%
Santa Fe	31	13	41.9%
Taos	15	12	80.0%
Union	2	1	50.0%
Region Totals	99	47	47.5%
State Totals	503	154	30.6%
National Standard—At least			32.0%
SFY 09 State Standard—At least			26.8%

Children Reunified In Less Than Twelve Months Of Entry Into Care

County	Total # Reunified	# Reunified less than 12 Months	% Reunified less than 12 Months
Colfax	18	18	100.0%
Guadalupe	0	0	0.0%
Los Alamos	1	0	0.0%
Rio Arriba	14	11	78.6%
San Miguel	52	31	59.6%
Santa Fe	60	47	78.3%
Taos	22	12	54.5%
Union	0	0	0.0%
Region Totals	167	119	71.3%
State Totals	1,630	1,178	72.3%
National Standard—At least			76.2%
SFY 09 State Standard—At least			78.0%

Source: Sm0907

Children Reentering Care Within Twelve Months Of A Prior Episode

County	Total Entering Care #	# Reentering within 12 months	% Reentering within 12 months
Colfax	22	0	0.0%
Guadalupe	0	0	0.0%
Los Alamos	3	0	0.0%
Rio Arriba	34	5	14.7%
San Miguel	62	7	11.3%
Santa Fe	69	4	5.8%
Taos	26	2	7.7%
Union	0	0	0.0%
Region Totals	216	18	8.3%
State Totals	2,105	208	9.9%
National Standard—At or below			8.6%

Children In Care For Twelve Months With No More Than 2 Placements

County	Total	# With Two or Fewer	% With Two or Fewer
Colfax	26	24	92.3%
Guadalupe	0	0	0.0%
Los Alamos	4	3	75.0%
Rio Arriba	39	30	76.9%
San Miguel	70	66	94.3%
Santa Fe	86	78	90.7%
Taos	37	33	89.2%
Union	0	0	0.0%
Region Totals	262	234	89.3%
State Totals	2,486	2,116	85.1%
National Standard—At least			86.7%
SFY 09 State Standard—At least			83.3%

Source: Sm0907



REGION THREE (METRO)

JANUARY – DECEMBER 2008

CPS Reports Of Abuse And Neglect						
	Accepted		Not Accepted		Total	County % of State Total Reports
County	#	%	#	%	#	
Bernalillo	4,218	43.3%	5,530	56.7%	9,748	31.7%
Region Totals	4,218	43.3%	5,530	56.7%	9,748	31.7%
State Totals	13,833	45.0%	16,900	55.0%	30,733	100.0%

Source: Sm01a02

CPS Investigations									
	Accepted Reports	Substantiated		Unsubstantiated		Total	County % of State Total Investigations	Number of Substantiated Child Victims	Victim Rate per 1,000
County		#	%	#	%	#	%		
Bernalillo East	4,218	381	19.5%	1,570	80.5%	1,951	14.3%	546	7.0
Bernalillo West		352	17.0%	1,719	83.0%	2,071	15.2%		
Region Totals	4,218	733	18.2%	3,289	81.8%	4,022	29.6%	1,016	7.0
State Totals	13,833	3,407	25.0%	10,200	75.0%	13,607	100.0%	4,985	9.7

Source: Sm06a01

REGION THREE (METRO)

JANUARY – DECEMBER 2008

CPS Allegation Types																				
County	Physical Abuse					Sexual Abuse					Physical Neglect					Totals				
	Total	Sub		Unsub		Total	Sub		Unsub		Total	Sub		Unsub		Total	Sub		Unsub	
		#	%	#	%		#	%	#	%		#	%	#	%		#	%	#	%
Bernalillo E	1,421	223	15.7%	1,198	84.3%	156	41	26.3%	115	73.7%	3,415	701	20.5%	2,714	79.5%	4,992	965	19.3%	4,027	80.7%
Bernalillo W	1,506	162	10.8%	1,344	89.2%	189	34	18.0%	155	82.0%	3,520	561	15.9%	2,959	84.1%	5,215	757	14.5%	4,458	85.5%
Region Totals	2,927	385	13.2%	2,542	86.8%	345	75	21.7%	270	78.3%	6,935	1,262	18.2%	5,673	81.8%	10,207	1,722	16.9%	8,485	83.1%
State Totals	9,999	1,875	18.8%	8,124	81.2%	1,189	260	21.9%	929	78.1%	25,200	6,297	25.0%	18,903	75.0%	36,388	8,432	23.2%	27,956	76.8%

Source: Sm06a01

Recurrence of Substantiated Maltreatment Within 6 Months of A Previously Substantiated Report of Maltreatment			
County	Total # of Maltreatment Victims	# With Recurrence	% With Recurrence
Bernalillo East	554	34	6.1%
Bernalillo West	498	20	4.0%
Region Totals	1,052	54	5.1%
State Totals	4,753	275	5.8%
National Standard—No more than			6.1%
SYF 09 State Standard—No more than			7.0%

Source: Sm0907

Children Maltreated In Foster Care (Performance Over 12 Months)			
County	Total # of Children in Care	# Maltreated	%
Bernalillo East	552	2	0.36%
Bernalillo West	421	0	0.00%
Region Totals	973	2	0.21%
State Totals	4,562	20	0.44%
National Standard—No more than			0.57%
SFY 09 State Standard—No more than			0.57%

Source: Sm0907

REGION THREE (METRO)

JANUARY– DECEMBER 2008

Children With A Finalized Adoption Within 24 Months Of Entry Into Care			
	Total # Adopted	# <24 Months	%
Bernalillo East	47	14	29.8%
Bernalillo West	40	17	42.5%
Region Totals	87	31	35.6%
State Totals	503	154	30.6%
National Standard—At least			32.0%
SFY 09 State Standard—At least			26.8%

Source: Sm0907

Children Reentering Care Within Twelve Months Of A Prior Episode			
	Total Entering Care #	# Reentering within 12 Months	% Reentering within 12 months
Bernalillo East	335	45	13.4%
Bernalillo West	239	8	3.3%
Region Totals	574	53	9.2%
State Totals	2,105	208	9.9%
National Standard—At or below			8.6%

Source: Sm0907

Children Reunified In Less Than Twelve Months Of Entry Into Care			
County	Total # Reunified	# Reunified less than 12 Months	% Reunified less than 12 Months
Bernalillo East	244	190	77.9%
Bernalillo West	153	125	81.7%
Region Totals	397	315	79.3%
State Totals	1,630	1,178	72.3%
National Standard—At least			76.2%
SFY 09 State Standard—At least			78.0%

Source: Sm0907

Children In Care For Twelve Months With No More Than 2 Placements			
County	Total	# With Two or Fewer	% With Two or Fewer
Bernalillo East	364	322	88.5%
Bernalillo West	271	224	82.7%
Region Totals	635	546	86.0%
State Totals	2,486	2,116	85.1%
National Standard—At least			86.7%
SFY 09 State Standard—At least			83.3%

Source: Sm0907



REGION FOUR (SE)

JANUARY – DECEMBER 2008

CPS Reports Of Abuse And Neglect						
County	Accepted		Not Accepted		Total	County % of State Total Reports
	#	%	#	%	#	
Chaves	656	53.1%	579	46.9%	1,235	4.0%
Curry	437	50.4%	430	49.6%	867	2.8%
De Baca	15	65.2%	8	34.8%	23	0.1%
Eddy	525	50.1%	523	49.9%	1,048	3.4%
Harding	1	14.3%	6	85.7%	7	0.0%
Lea	462	50.4%	455	49.6%	917	3.0%
Quay	134	52.8%	120	47.2%	254	0.8%
Roosevelt	157	54.5%	131	45.5%	288	0.9%
Region Totals	2,387	51.5%	2,252	48.5%	4,639	15.1%
State Totals	13,833	45.0%	16,900	55.0%	30,733	100.0%

Source: Sm01a02

CPS Investigations									
County	Accepted Reports	Substantiated		Unsubstantiated		Total	County % of State Total Investigations	Number of Substantiated Child Victims	Victim Rate per 1,000
		#	%	#	%	#			
Chaves	656	238	37.4%	398	62.6%	636	4.7%	378	21.2
Curry	437	175	42.2%	240	57.8%	415	3.0%	249	18.4
De Baca	15	5	31.3%	11	68.8%	16	0.1%	5	9.3
Eddy	525	140	26.2%	395	73.8%	535	3.9%	201	13.5
Harding	1	1	100.0%	0	0.0%	1	0.0%	1	6.1
Lea	462	179	35.7%	323	64.3%	502	3.7%	257	15.4
Quay	134	70	49.0%	73	51.0%	143	1.1%	104	40.9
Roosevelt	157	46	32.4%	96	67.6%	142	1.0%	79	15.6
Region Totals	2,387	854	35.7%	1,536	64.3%	2,390	17.6%	1,274	17.9
State Totals	13,833	3,407	25.0%	10,200	75.0%	13,607	100.0%	4,985	9.7

Source: Sm06a01



REGION FOUR (SE)

JANUARY – DECEMBER 2008

CPS Allegation Types																				
County	Physical Abuse					Sexual Abuse					Physical Neglect					Totals				
	Total	Sub		Unsub		Total	Sub		Unsub		Total	Sub		Unsub		Total	Sub		Unsub	
		#	%	#	%		#	%	#	%		#	%	#	%		#	%	#	%
Chaves	468	135	28.8%	333	71.2%	42	10	23.8%	32	76.2%	1,314	479	36.5%	835	63.5%	1,824	624	34.2%	1,200	65.8%
Curry	285	69	24.2%	216	75.8%	36	13	36.1%	23	63.9%	860	326	37.9%	534	62.1%	1,181	408	34.5%	773	65.5%
De Baca	19	3	15.8%	16	84.2%	3	0	0.0%	3	100.0%	30	9	30.0%	21	70.0%	52	12	23.1%	40	76.9%
Eddy	363	75	20.7%	288	79.3%	43	14	32.6%	29	67.4%	1,012	247	24.4%	765	75.6%	1,418	336	23.7%	1,082	76.3%
Harding	1	1	100.0%	0	0.0%	0	0	0.0%	0	0.0%	0	0	0.0%	0	0.0%	1	1	100.0%	0	0.0%
Lea	340	114	33.5%	226	66.5%	47	13	27.7%	34	72.3%	1,131	395	34.9%	736	65.1%	1,518	522	34.4%	996	65.6%
Quay	288	52	18.1%	236	81.9%	28	10	35.7%	18	64.3%	828	225	27.2%	603	72.8%	1,144	287	25.1%	857	74.9%
Roosevelt	85	6	7.1%	79	92.9%	18	5	27.8%	13	72.2%	280	108	38.6%	172	61.4%	383	119	31.1%	264	68.9%
Region Totals	1,849	455	24.6%	1,394	75.4%	217	65	30.0%	152	70.0%	5,455	1,789	32.8%	3,666	67.2%	7,521	2,309	30.7%	5,212	69.3%
State Totals	9,999	1,875	18.8%	8,124	81.2%	1,189	260	21.9%	929	78.1%	25,200	6,297	25.0%	18,903	75.0%	36,388	8,432	23.2%	27,956	76.8%

Source: Sm06a01

Recurrence of Substantiated Maltreatment Within 6 Months of A Previously Substantiated Report of Maltreatment			
County	Total # of Maltreatment Victims	# With Recurrence	% With Recurrence
Chaves	360	26	7.2%
Curry	241	23	9.5%
De Baca	0	0	0.0%
Eddy	221	8	3.6%
Harding	0	0	0.0%
Lea	251	25	10.0%
Quay	97	7	7.2%
Roosevelt	74	2	2.7%
Region Totals	1,244	91	7.3%
State Totals	4,753	275	5.8%
National Standard—No more than			6.1%
SYF 09 State Standard—No more than			7.0%

Source: Sm0907

Children Maltreated In Foster Care (Performance Over 12 Months)			
County	Total # of Children in Care	# Maltreated	%
Chaves	330	5	1.52%
Curry	121	0	0.00%
De Baca	0	0	0.00%
Eddy	136	1	0.74%
Harding	0	0	0.0%
Lea	160	2	1.25%
Quay	60	0	0.00%
Roosevelt	65	0	0.00%
Region Totals	872	8	0.92%
State Totals	4,562	20	0.44%
National Standard—No more than			0.57%
SFY 09 State Standard—No more than			0.57%

Source: SM0907

REGION FOUR (SE)

JANUARY – DECEMBER 2008

Children With A Finalized Adoption Within 24 Months Of Entry Into Care			
County	Total # Adopted	# <24 Months	%
Chaves	31	10	32.3%
Curry	14	4	28.6%
De Baca	0	0	0.0%
Eddy	25	11	44.0%
Lea	3	2	66.7%
Quay	7	0	0.0%
Roosevelt	7	5	71.4%
Region Totals	87	32	36.8%
State Totals	503	154	30.6%
National Standard—At least			32.0%
SFY 09 State Standard—At least			26.8%

Source: Sm0907

Children Reunified In Less Than Twelve Months Of Entry Into Care			
County	Total # Reunified	# Reunified less than 12 Months	% Reunified less than 12 Months
Chaves	174	120	69.0%
Curry	57	25	43.9%
De Baca	0	0	0.0%
Eddy	0	0	0.0%
Harding	39	27	69.2%
Lea	53	32	60.4%
Quay	15	5	33.3%
Roosevelt	19	11	57.9%
Region Totals	357	220	61.6%
State Totals	1,630	1,178	72.3%
National Standard—At least			76.2%
SFY 09 State Standard—At least			78.0%

Source: Sm0907

Children Reentering Care Within Twelve Months Of A Prior Episode			
County	Total Entering Care #	# Reentering within 12 Months	% Reentering within 12 months
Chaves	186	25	13.4%
Curry	55	5	9.1%
De Baca	0	0	0.0%
Eddy	69	8	11.6%
Harding	0	0	0.0%
Lea	79	9	11.4%
Quay	20	2	10.0%
Roosevelt	23	0	0.0%
Region Totals	432	49	11.3%
State Totals	2,105	208	9.9%
National Standard—At or below			8.6%

Source: Sm0907

Children in Care For Twelve Months With No More Than 2 Placements			
County	Total	# With Two or Fewer	% With Two or Fewer
Chaves	223	174	78.0%
Curry	72	50	69.4%
De Baca	0	0	0.0%
Eddy	82	59	72.0%
Harding	0	0	0.0%
Lea	100	81	81.0%
Quay	31	23	74.2%
Roosevelt	35	24	68.6%
Region Totals	543	411	75.7%
State Totals	2,486	2,116	85.1%
National Standard—At least			86.7%
SFY 09 State Standard—At least			83.3%

Source: Sm0907

REGION FIVE (SW)

JANUARY– DECEMBER 2008

CPS Reports Of Abuse And Neglect						
County	Accepted		Not Accepted		Total	County % of State Total Reports
	#	%	#	%	#	
Catron	11	55.0%	9	45.0%	20	0.1%
Doña Ana	1,643	43.6%	2,122	56.4%	3,765	12.3%
Grant	261	45.9%	308	54.1%	569	1.9%
Hidalgo	65	44.5%	81	55.5%	146	0.5%
Lincoln	139	50.7%	135	49.3%	274	0.9%
Luna	203	47.1%	228	52.9%	431	1.4%
Otero	326	47.7%	358	52.3%	684	2.2%
Sierra	94	38.4%	151	61.6%	245	0.8%
Socorro	167	46.5%	192	53.5%	359	1.2%
Region Totals	2,909	44.8%	3,584	55.2%	6,493	21.1%
State Totals	13,833	45.0%	16,900	55.0%	30,733	100.0%

Source: Sm01a02

CPS Investigations									
County	Accepted Reports	Substantiated		Unsubstantiated		Total	County % of State Total Investigations	Number of Substantiated Child Victims	Victim Rate per 1,000
		#	%	#	%	#			
Catron	11	3	37.5%	5	62.5%	8	0.1%	5	6.7
Dona Ana	1,643	392	23.3%	1,287	76.7%	1,679	12.3%	599	11.5
Grant	261	55	17.7%	256	82.3%	311	2.3%	69	8.5
Hidalgo	65	15	30.6%	34	69.4%	49	0.4%	20	10.6
Lincoln	139	47	35.9%	84	64.1%	131	1.0%	55	12.5
Luna	203	59	31.9%	126	68.1%	185	1.4%	79	10.5
Otero	326	93	25.2%	276	74.8%	369	2.7%	132	7.2
Sierra	94	19	20.4%	74	79.6%	93	0.7%	21	7.9
Socorro	167	18	11.5%	138	88.5%	156	1.1%	18	3.5
Region Totals	2,909	701	23.5%	2,280	76.5%	2,981	21.9%	998	9.9
State Totals	13,833	3,407	25.0%	10,200	75.0%	13,607	100.0%	4,985	9.7

Source: Sm06a01

REGION FIVE (SW)

JANUARY – DECEMBER 2008

CPS Allegation Types

County	Physical Abuse					Sexual Abuse					Physical Neglect					Totals				
	Sub		Unsub			Sub		Unsub			Sub		Unsub			Sub		Unsub		
	Total	#	%	#	%	Total	#	%	#	%	Total	#	%	#	%	Total	#	%	#	%
Catron	5	4	80.0%	1	20.0%	1	1	100.0%	0	0.0%	15	4	26.7%	11	73.3%	21	9	42.9%	12	57.1%
Doña Ana	1,301	148	11.4%	1,153	88.6%	163	37	22.7%	126	77.3%	3,094	810	26.2%	2,284	73.8%	4,558	995	21.8%	3,563	78.2%
Grant	185	27	14.6%	158	85.4%	29	0	0.0%	29	100.0%	497	73	14.7%	424	85.3%	711	100	14.1%	611	85.9%
Hidalgo	36	9	25.0%	27	75.0%	2	0	0.0%	2	100.0%	104	28	26.9%	76	73.1%	142	37	26.1%	105	73.9%
Lincoln	61	23	37.7%	38	62.3%	14	3	21.4%	11	78.6%	253	71	28.1%	182	71.9%	328	97	29.6%	231	70.4%
Luna	120	24	20.0%	96	80.0%	11	2	18.2%	9	81.8%	318	100	31.4%	218	68.6%	449	126	28.1%	323	71.9%
Otero	288	52	18.1%	236	81.9%	28	10	35.7%	18	64.3%	828	225	27.2%	603	72.8%	1,144	287	25.1%	857	74.9%
Sierra	57	9	15.8%	48	84.2%	9	1	11.1%	8	88.9%	149	23	15.4%	126	84.6%	215	33	15.3%	182	84.7%
Socorro	98	10	10.2%	88	89.8%	18	3	16.7%	15	83.3%	256	18	7.0%	238	93.0%	372	31	8.3%	341	91.7%
Region Totals	2,151	306	14.2%	1,845	85.8%	275	57	20.7%	218	79.3%	5,514	1,352	24.5%	4,162	75.5%	7,940	1,715	21.6%	6,225	78.4%
State Totals	9,999	1,875	18.8%	8,124	81.2%	1,189	260	21.9%	929	78.1%	25,200	6,297	25.0%	18,903	75.0%	36,388	8,432	23.2%	27,956	76.8%

Source: Sm06a01

Recurrence of Substantiated Maltreatment Within 6 Months of A Previously Substantiated Report of Maltreatment			
County	Total # of Maltreatment Victims	# With Recurrence	% With Recurrence
Doña Ana	517	34	6.6%
Grant	67	6	9.0%
Hidalgo	5	0	0.0%
Lincoln	56	6	10.7%
Luna	84	6	7.1%
Otero	127	10	7.9%
Sierra	25	0	0.0%
Socorro	31	2	6.5%
Region Totals	912	64	7.0%
State Totals	4,753	275	5.8%
National Standard—No more than			6.1%
SYF 09 State Standard—No more than			7.0%

Source: Sm0907

Children Maltreated In Foster Care (Performance Over 12 Months)			
County	Total # of Children in Care	# Maltreated	%
Doña Ana	427	1	0.23%
Grant	92	1	1.09%
Hidalgo	0	0	0.00%
Lincoln	37	0	0.00%
Luna	86	1	1.16%
Otero	84	0	0.00%
Sierra	27	0	0.00%
Socorro	25	0	0.00%
Region Totals	778	3	0.39%
State Totals	4,562	20	0.44%
National Standard—No more than			0.57%
SFY 09 State Standard—No more than			0.57%

Source: Sm0907

REGION FIVE (SW)

JANUARY – DECEMBER 2008

Children With A Finalized Adoption Within 24 Months Of Entry Into Care			
County	Total # Adopted	# <24 Months	%
Catron	2	0	0.0%
Dofia Ana	66	15	22.7%
Grant	10	1	10.0%
Hidalgo	0	0	0.0%
Lincoln	5	3	60.0%
Luna	7	0	0.0%
Otero	18	2	11.1%
Sierra	1	0	0.0%
Socorro	17	0	0.0%
Region Totals	126	21	16.7%
State Totals	503	154	30.6%
National Standard—At least			32.0%
SFY 09 State Standard—At least			26.8%

Source: Sm0907

Children Reunified in Less Than Twelve Months Of Entry Into Care			
County	Total # Reunified	# Reunified less than 12 Months	% Reunified less than 12 Months
Dofia Ana	232	187	80.6%
Grant	48	39	81.3%
Hidalgo	0	0	0.0%
Lincoln	18	15	83.3%
Luna	42	31	73.8%
Otero	29	14	48.3%
Sierra	7	7	100.0%
Socorro	6	5	83.3%
Region Totals	382	298	78.0%
State Totals	1,630	1,178	72.3%
National Standard—At least			76.2%
SFY 09 State Standard—At least			78.0%

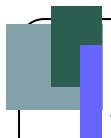
Source: Sm0907

Children Reentering Care Within Twelve Months Of A Prior Episode			
County	Total Entering Care #	# Reentering within 12 months	% Reentering within 12 months
Dofia Ana	249	21	8.4%
Grant	52	6	11.5%
Hidalgo	0	0	0.0%
Lincoln	24	2	8.3%
Luna	51	5	9.8%
Otero	44	7	15.9%
Sierra	15	1	6.7%
Socorro	9	2	22.2%
Region Totals	444	44	9.9%
State Totals	2,105	208	9.9%
National Standard—At or below			8.6%

Source: Sm0907

Children in Care For Twelve Months With No More Than 2 Placements			
County	Total	# With Two or Fewer	% With Two or Fewer
Dona Ana	293	252	86.0%
Grant	57	54	94.7%
Hidalgo	0	0	0.0%
Lincoln	29	25	86.2%
Luna	54	42	77.8%
Otero	58	47	81.0%
Sierra	17	16	94.1%
Socorro	14	14	100.0%
Region Totals	522	450	86.2%
State Totals	2,486	2,116	85.1%
National Standard—At least			86.7%
SFY 09 State Standard—At least			83.3%

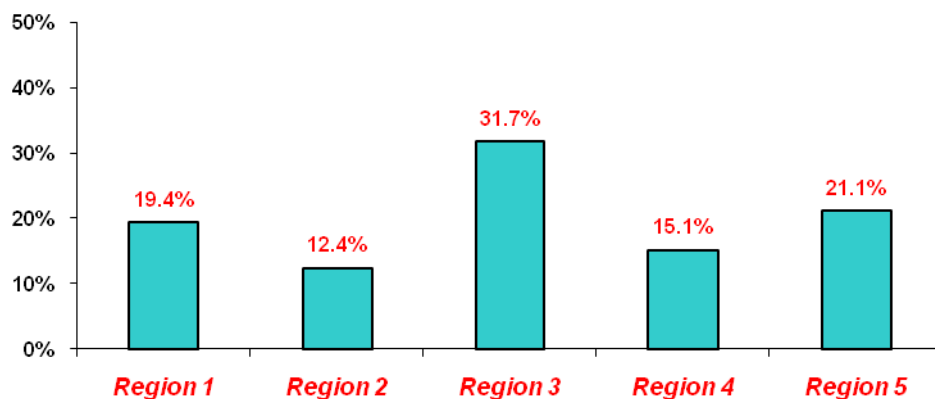
Source: Sm0907



REGIONAL COMPARISON - PERCENT OF STATEWIDE TOTALS

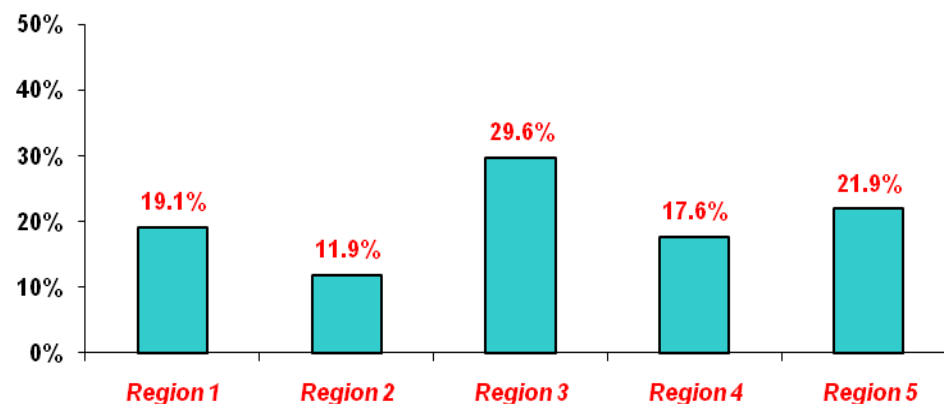
JANUARY– DECEMBER 2008

CPS Reports of Abuse and Neglect¹



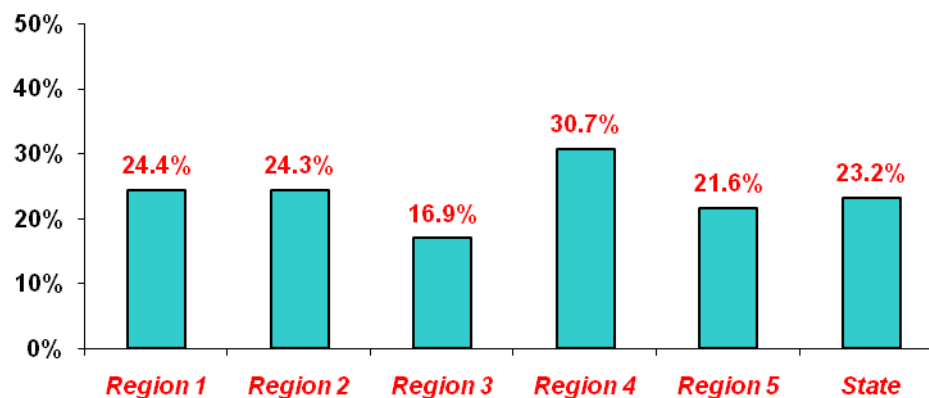
1. This chart depicts each Region's relative proportion of the State's total of CPS Reports of Abuse & Neglect and does not equal 100%, due to rounding.

CPS Total Investigations²

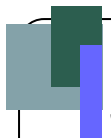


2. This chart depicts each Region's relative proportion of the State's total of CPS Total Investigations and does not equal 100%, due to rounding.

Total Substantiated Allegations³



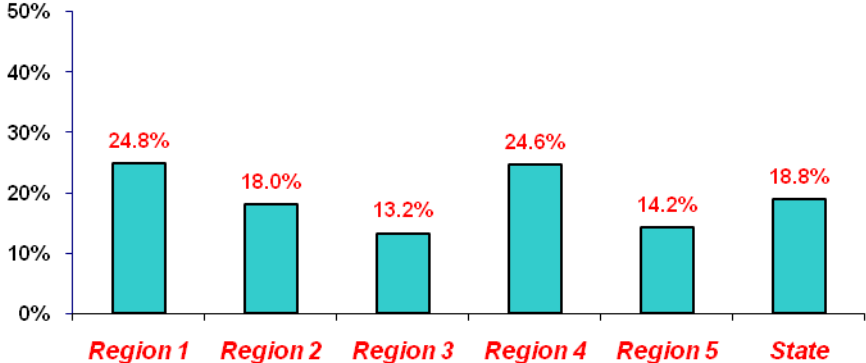
3. For each Region the chart depicts the proportion of substantiated allegations within the Region. For comparison with the Regions, the State proportion is provided.



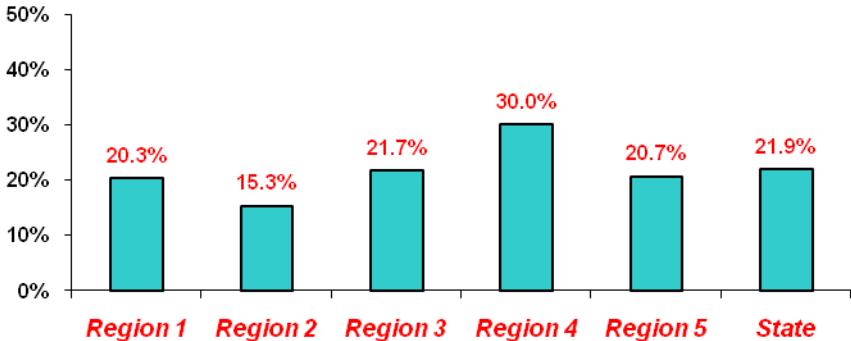
REGIONAL COMPARISON¹ - PERCENT OF STATEWIDE TOTALS

JANUARY – DECEMBER 2008

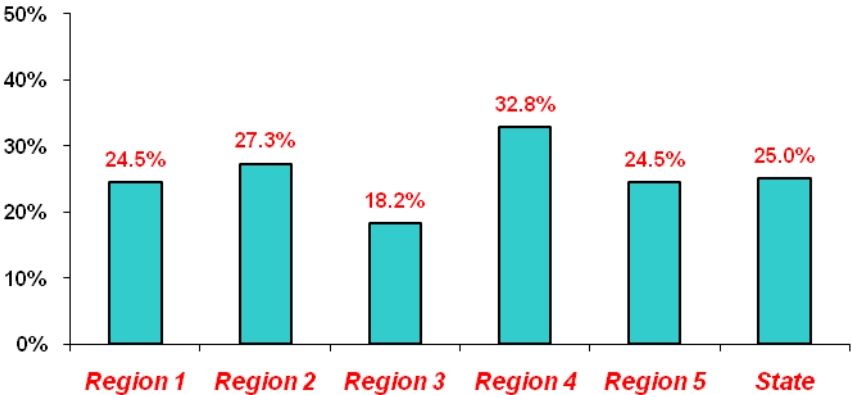
Substantiated Physical Abuse¹



Substantiated Sexual Abuse¹



Substantiated Physical Neglect¹



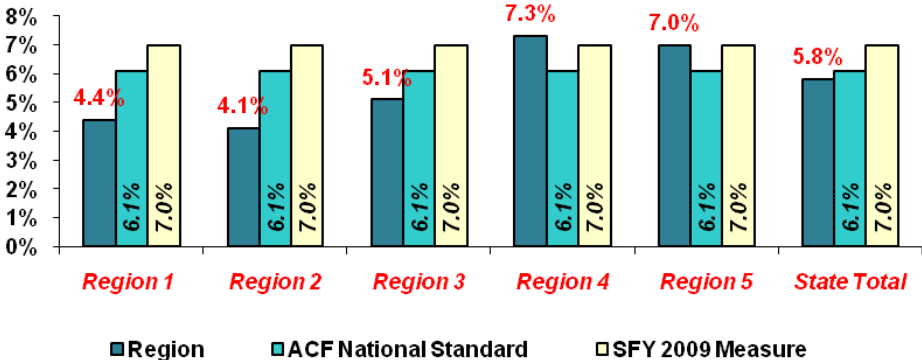
1. For each Region the chart depicts the proportion within the Region. For comparison with the Regions, the State proportion is provided.



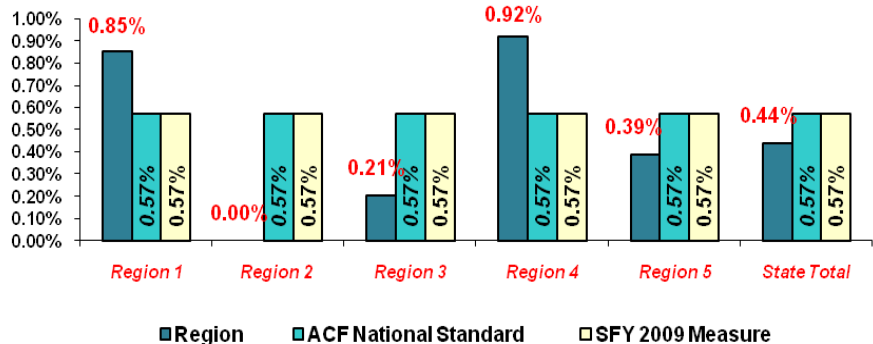
REGIONAL COMPARISON¹ - PERCENT OF STATEWIDE TOTALS

JANUARY – DECEMBER 2008

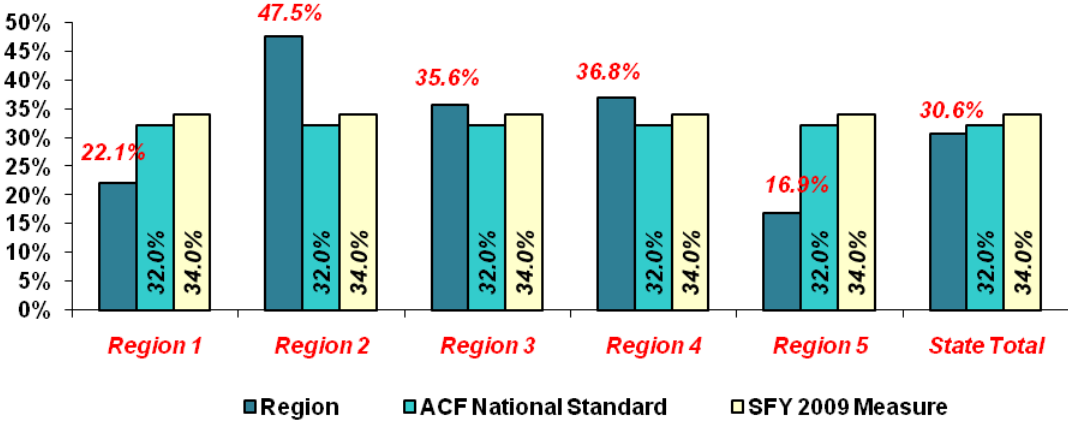
Percent of Recurrence of Substantiated Maltreatment Within 6 Months of a Previously Substantiated Report of Maltreatment¹



Percent of Children Maltreated in Foster Care (Performance over 12 months)¹



Percent of Children With a Finalized Adoption Within 24 Months of Entry into Care¹



ACF = Administration of Children and Families
SFY = State Fiscal Year

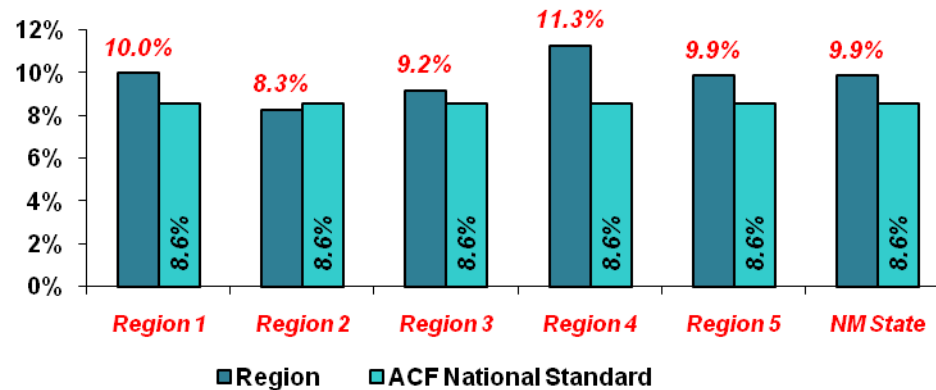
1. For each Region the chart depicts the proportion within the Region. For comparison with the Regions, the State proportion is provided.



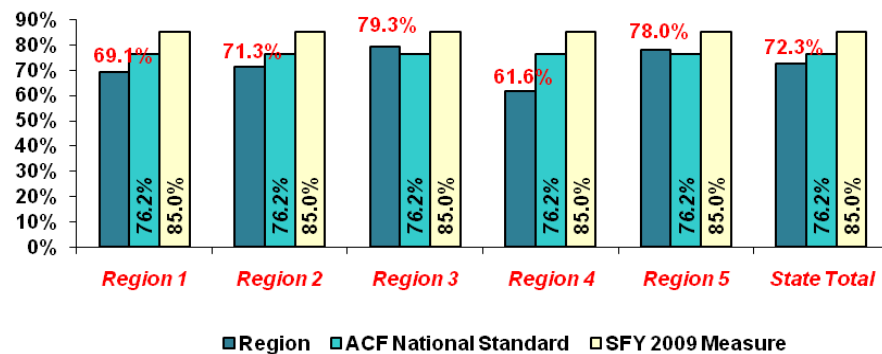
REGIONAL COMPARISON¹ - PERCENT OF STATEWIDE TOTALS

JANUARY – DECEMBER 2008

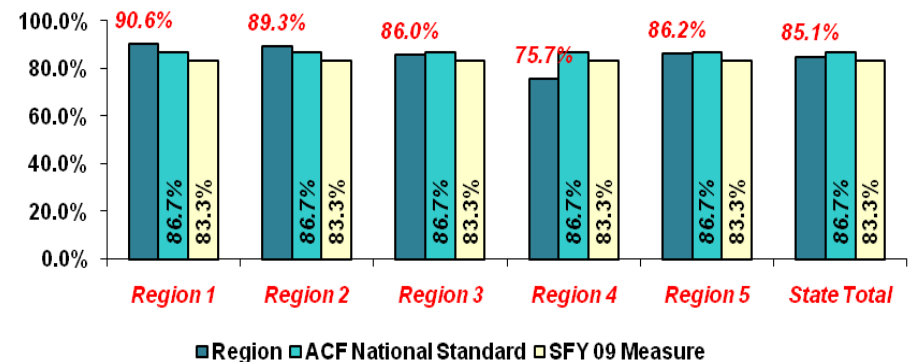
Percent of Children Reentering Care Within Twelve Months of A Prior Episode¹



Percent of Children Reunified in Less Than Twelve Months of Entry Into Care¹



Percent of Children in Care With No More Than 2 Placements¹



1. For each Region the chart depicts the proportion within the Region. For comparison with the Regions, the State proportion is provided.

ACF = Administration of Children and Families
SFY = State Fiscal Year